



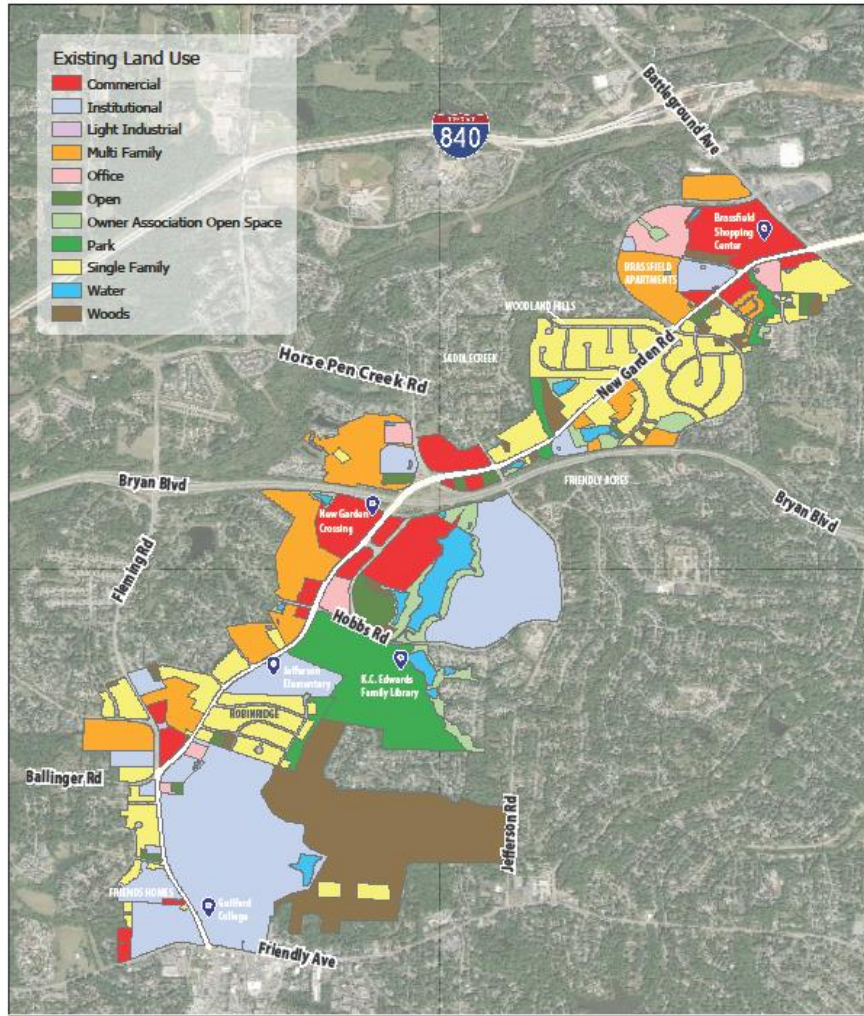
# NEW GARDEN ROAD STRATEGIC PLAN



*City Council - September 2019*  
**Planning Department**



# Background



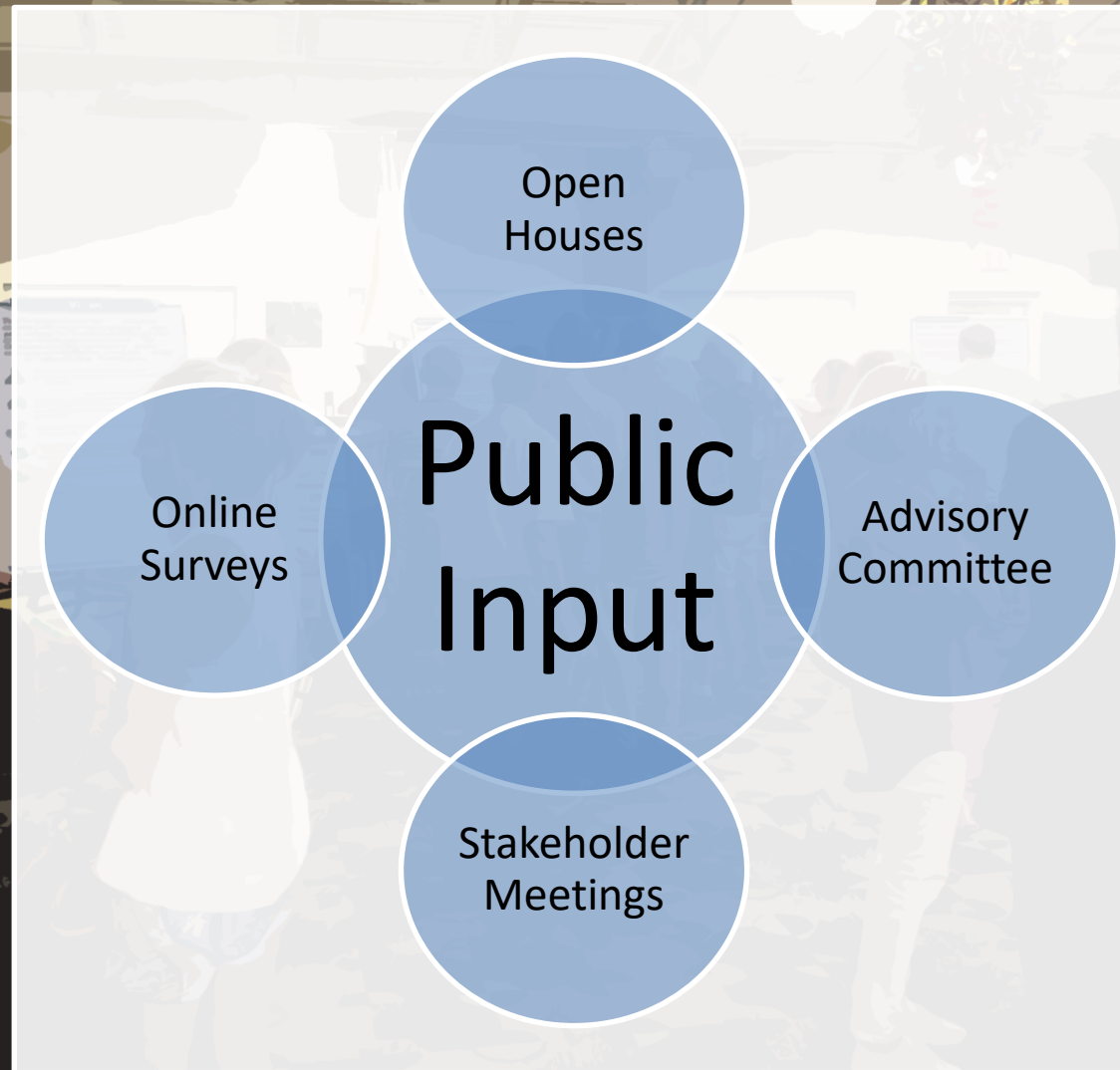
Existing Land Use Map

NEW GARDEN ROAD  
STRATEGIC PLAN



- Commercial districts and residential communities
- Nearly four miles long, approximately 950 residences.
- Rezoning and redevelopment
- 2017 City Survey

# Community Involvement



# Vision

*The New Garden Road Corridor is the thread that connects terrific neighborhoods, with places to shop, work, and play. The New Garden Road Strategic Plan informs residents, property-owners, and the City of Greensboro about the steps necessary to protect the community character, property values, and the quality of life that makes this area a desirable place.*



# Goal Areas



Balance



Character



Mobility



Community



Linkages



# Moving Forward

- The New Garden Road Strategic Plan will provide guidance and a framework of discussion for:
  - Land use conversations among stakeholders of the corridor, prior to the zoning process.
  - Infrastructure planning
  - City services planning
  - Wayfinding and corridor branding; and
  - Community involvement into the future.





# NEW GARDEN ROAD STRATEGIC PLAN



*City Council - September 2019*  
**Planning Department**