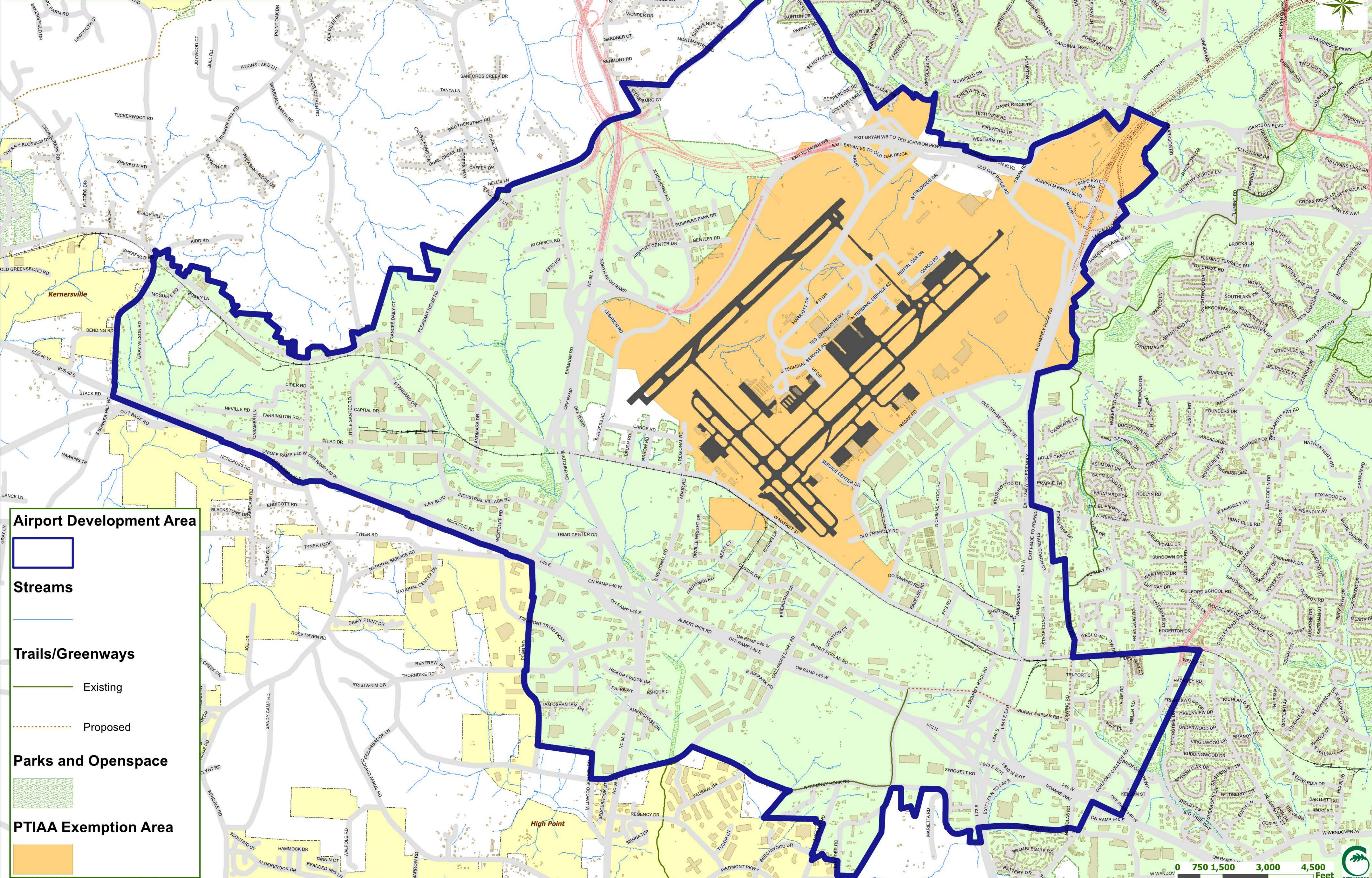


Airport Economic Development Strategy Area



Airport Development Area

Streams

Trails/Greenways

Existing

Proposed

Parks and Openspace

PTIAA Exemption Area

Population Summary

2000 Total Population	4,606
2010 Total Population	6,564
2016 Total Population	7,022
2016 Group Quarters	38
2021 Total Population	7,411
2016-2021 Annual Rate	1.08%
2016 Total Daytime Population	36,952
Workers	34,358
Residents	2,594

Household Summary

2000 Households	2,308
2000 Average Household Size	1.99
2010 Households	3,393
2010 Average Household Size	1.92
2016 Households	3,604
2016 Average Household Size	1.94
2021 Households	3,788
2021 Average Household Size	1.95
2016-2021 Annual Rate	1.00%
2010 Families	1,574
2010 Average Family Size	2.66
2016 Families	1,660
2016 Average Family Size	2.70
2021 Families	1,743
2021 Average Family Size	2.71
2016-2021 Annual Rate	0.98%

Housing Unit Summary

2000 Housing Units	2,507
Owner Occupied Housing Units	55.4%
Renter Occupied Housing Units	36.7%
Vacant Housing Units	7.9%
2010 Housing Units	3,684
Owner Occupied Housing Units	36.6%
Renter Occupied Housing Units	55.5%
Vacant Housing Units	7.9%
2016 Housing Units	3,930
Owner Occupied Housing Units	33.2%
Renter Occupied Housing Units	58.5%
Vacant Housing Units	8.3%
2021 Housing Units	4,132
Owner Occupied Housing Units	32.8%
Renter Occupied Housing Units	58.9%
Vacant Housing Units	8.3%

Median Household Income

2016	\$39,424
2021	\$41,001

Median Home Value

2016	\$112,032
2021	\$143,750

Per Capita Income

2016	\$27,586
2021	\$29,553

Median Age

2010	30.5
2016	32.1
2021	32.7

Data Note: Household population includes persons not residing in group quarters. Average Household Size is the household population divided by total households. Persons in families include the householder and persons related to the householder by birth, marriage, or adoption. Per Capita Income represents the income received by all persons aged 15 years and over divided by the total population.

Source: U.S. Census Bureau, Census 2010 Summary File 1. Esri forecasts for 2016 and 2021 Esri converted Census 2000 data into 2010 geography.



Community Profile

Airport ED Study Area
Area: 18.87 square miles

Prepared by Esri

2016 Households by Income

Household Income Base	3,604
<\$15,000	13.3%
\$15,000 - \$24,999	12.9%
\$25,000 - \$34,999	16.8%
\$35,000 - \$49,999	18.2%
\$50,000 - \$74,999	16.3%
\$75,000 - \$99,999	10.9%
\$100,000 - \$149,999	6.7%
\$150,000 - \$199,999	2.6%
\$200,000+	2.2%

Average Household Income \$55,354

2021 Households by Income

Household Income Base	3,788
<\$15,000	13.6%
\$15,000 - \$24,999	12.8%
\$25,000 - \$34,999	18.3%
\$35,000 - \$49,999	11.1%
\$50,000 - \$74,999	18.9%
\$75,000 - \$99,999	11.7%
\$100,000 - \$149,999	8.1%
\$150,000 - \$199,999	3.1%
\$200,000+	2.3%

Average Household Income \$59,697

2016 Owner Occupied Housing Units by Value

Total	1,303
<\$50,000	4.1%
\$50,000 - \$99,999	42.4%
\$100,000 - \$149,999	14.4%
\$150,000 - \$199,999	10.5%
\$200,000 - \$249,999	8.9%
\$250,000 - \$299,999	5.1%
\$300,000 - \$399,999	8.6%
\$400,000 - \$499,999	1.3%
\$500,000 - \$749,999	3.2%
\$750,000 - \$999,999	1.2%
\$1,000,000 +	0.2%

Average Home Value \$172,254

2021 Owner Occupied Housing Units by Value

Total	1,352
<\$50,000	3.6%
\$50,000 - \$99,999	37.4%
\$100,000 - \$149,999	10.4%
\$150,000 - \$199,999	10.4%
\$200,000 - \$249,999	13.0%
\$250,000 - \$299,999	7.5%
\$300,000 - \$399,999	10.7%
\$400,000 - \$499,999	1.8%
\$500,000 - \$749,999	3.2%
\$750,000 - \$999,999	1.8%
\$1,000,000 +	0.1%

Average Home Value \$193,912

Data Note: Income represents the preceding year, expressed in current dollars. Household income includes wage and salary earnings, interest dividends, net rents, pensions, SSI and welfare payments, child support, and alimony.

Source: U.S. Census Bureau, Census 2010 Summary File 1. Esri forecasts for 2016 and 2021 Esri converted Census 2000 data into 2010 geography.

January 31, 2017

2010 Population by Age

Total	6,565
0 - 4	6.9%
5 - 9	5.4%
10 - 14	5.2%
15 - 24	17.4%
25 - 34	23.2%
35 - 44	15.6%
45 - 54	12.2%
55 - 64	8.2%
65 - 74	3.7%
75 - 84	1.6%
85 +	0.5%
18 +	79.0%

2016 Population by Age

Total	7,022
0 - 4	6.5%
5 - 9	5.8%
10 - 14	5.1%
15 - 24	15.4%
25 - 34	23.6%
35 - 44	14.7%
45 - 54	12.2%
55 - 64	9.0%
65 - 74	5.2%
75 - 84	1.9%
85 +	0.6%
18 +	79.3%

2021 Population by Age

Total	7,412
0 - 4	6.4%
5 - 9	5.4%
10 - 14	5.3%
15 - 24	15.5%
25 - 34	21.9%
35 - 44	15.0%
45 - 54	11.4%
55 - 64	10.2%
65 - 74	5.8%
75 - 84	2.3%
85 +	0.7%
18 +	79.6%

2010 Population by Sex

Males	3,090
Females	3,474

2016 Population by Sex

Males	3,314
Females	3,708

2021 Population by Sex

Males	3,477
Females	3,934



Community Profile

Airport ED Study Area
Area: 18.87 square miles

Prepared by Esri

2010 Population by Race/Ethnicity

Total	6,564
White Alone	51.9%
Black Alone	36.3%
American Indian Alone	0.4%
Asian Alone	4.2%
Pacific Islander Alone	0.1%
Some Other Race Alone	3.2%
Two or More Races	3.9%
Hispanic Origin	7.8%
Diversity Index	65.5

2016 Population by Race/Ethnicity

Total	7,022
White Alone	48.1%
Black Alone	37.7%
American Indian Alone	0.4%
Asian Alone	5.3%
Pacific Islander Alone	0.1%
Some Other Race Alone	3.7%
Two or More Races	4.6%
Hispanic Origin	8.9%
Diversity Index	68.4

2021 Population by Race/Ethnicity

Total	7,411
White Alone	44.9%
Black Alone	38.6%
American Indian Alone	0.4%
Asian Alone	6.4%
Pacific Islander Alone	0.1%
Some Other Race Alone	4.2%
Two or More Races	5.2%
Hispanic Origin	10.1%
Diversity Index	70.9

2010 Population by Relationship and Household Type

Total	6,564
In Households	99.4%
In Family Households	65.9%
Householder	23.1%
Spouse	12.9%
Child	24.4%
Other relative	3.4%
Nonrelative	2.1%
In Nonfamily Households	33.5%
In Group Quarters	0.6%
Institutionalized Population	0.5%
Noninstitutionalized Population	0.0%

Data Note: Persons of Hispanic Origin may be of any race. The Diversity Index measures the probability that two people from the same area will be from different race/ethnic groups.

Source: U.S. Census Bureau, Census 2010 Summary File 1. Esri forecasts for 2016 and 2021 Esri converted Census 2000 data into 2010 geography.

January 31, 2017



Community Profile

Airport ED Study Area
Area: 18.87 square miles

Prepared by Esri

2016 Population 25+ by Educational Attainment

Total	4,719
Less than 9th Grade	1.0%
9th - 12th Grade, No Diploma	3.2%
High School Graduate	20.3%
GED/Alternative Credential	1.2%
Some College, No Degree	28.7%
Associate Degree	7.2%
Bachelor's Degree	29.1%
Graduate/Professional Degree	9.5%

2016 Population 15+ by Marital Status

Total	5,801
Never Married	55.7%
Married	30.1%
Widowed	2.9%
Divorced	11.3%

2016 Civilian Population 16+ in Labor Force

Civilian Employed	93.6%
Civilian Unemployed	6.4%

2016 Employed Population 16+ by Industry

Total	4,455
Agriculture/Mining	0.1%
Construction	2.4%
Manufacturing	12.8%
Wholesale Trade	6.5%
Retail Trade	20.1%
Transportation/Utilities	7.3%
Information	1.8%
Finance/Insurance/Real Estate	9.5%
Services	38.4%
Public Administration	1.1%

2016 Employed Population 16+ by Occupation

Total	4,455
White Collar	63.7%
Management/Business/Financial	14.0%
Professional	15.6%
Sales	15.2%
Administrative Support	18.9%
Services	16.7%
Blue Collar	19.7%
Farming/Forestry/Fishing	0.0%
Construction/Extraction	2.2%
Installation/Maintenance/Repair	0.8%
Production	4.3%
Transportation/Material Moving	12.4%

2010 Population By Urban/ Rural Status

Total Population	6,564
Population Inside Urbanized Area	94.5%
Population Inside Urbanized Cluster	0.0%
Rural Population	5.5%

Source: U.S. Census Bureau, Census 2010 Summary File 1. Esri forecasts for 2016 and 2021 Esri converted Census 2000 data into 2010 geography.

January 31, 2017



Community Profile

Airport ED Study Area
Area: 18.87 square miles

Prepared by Esri

2010 Households by Type

Total	3,393
Households with 1 Person	43.8%
Households with 2+ People	56.2%
Family Households	46.4%
Husband-wife Families	26.5%
With Related Children	11.8%
Other Family (No Spouse Present)	19.9%
Other Family with Male Householder	4.1%
With Related Children	2.3%
Other Family with Female Householder	15.8%
With Related Children	11.6%
Nonfamily Households	9.8%
All Households with Children	25.9%

Multigenerational Households	1.7%
Unmarried Partner Households	7.3%
Male-female	6.5%
Same-sex	0.8%

2010 Households by Size

Total	3,394
1 Person Household	43.8%
2 Person Household	31.4%
3 Person Household	13.4%
4 Person Household	7.4%
5 Person Household	2.9%
6 Person Household	0.8%
7 + Person Household	0.3%

2010 Households by Tenure and Mortgage Status

Total	3,393
Owner Occupied	39.7%
Owned with a Mortgage/Loan	33.5%
Owned Free and Clear	6.2%
Renter Occupied	60.3%

2010 Housing Units By Urban/ Rural Status

Total Housing Units	3,684
Housing Units Inside Urbanized Area	95.1%
Housing Units Inside Urbanized Cluster	0.0%
Rural Housing Units	4.9%

Data Note: Households with children include any households with people under age 18, related or not. Multigenerational households are families with 3 or more parent-child relationships. Unmarried partner households are usually classified as nonfamily households unless there is another member of the household related to the householder. Multigenerational and unmarried partner households are reported only to the tract level. Esri estimated block group data, which is used to estimate polygons or non-standard geography.

Source: U.S. Census Bureau, Census 2010 Summary File 1. Esri forecasts for 2016 and 2021 Esri converted Census 2000 data into 2010 geography.

January 31, 2017



Community Profile

Airport ED Study Area
Area: 18.87 square miles

Prepared by Esri

Top 3 Tapestry Segments

1. Young and Restless (11B)
2. Bright Young Professionals
3. Soccer Moms (4A)

2016 Consumer Spending

Apparel & Services: Total \$	\$5,684,276
Average Spent	\$1,577.21
Spending Potential Index	78
Education: Total \$	\$3,688,860
Average Spent	\$1,023.55
Spending Potential Index	72
Entertainment/Recreation: Total \$	\$7,499,042
Average Spent	\$2,080.76
Spending Potential Index	71
Food at Home: Total \$	\$13,846,707
Average Spent	\$3,842.04
Spending Potential Index	77
Food Away from Home: Total \$	\$8,840,714
Average Spent	\$2,453.03
Spending Potential Index	79
Health Care: Total \$	\$12,490,049
Average Spent	\$3,465.61
Spending Potential Index	65
HH Furnishings & Equipment: Total \$	\$4,627,087
Average Spent	\$1,283.88
Spending Potential Index	73
Personal Care Products & Services: Total \$	\$1,941,575
Average Spent	\$538.73
Spending Potential Index	74
Shelter: Total \$	\$43,336,794
Average Spent	\$12,024.64
Spending Potential Index	77
Support Payments/Cash Contributions/Gifts in Kind: Total \$	\$5,561,905
Average Spent	\$1,543.26
Spending Potential Index	67
Travel: Total \$	\$4,375,831
Average Spent	\$1,214.16
Spending Potential Index	65
Vehicle Maintenance & Repairs: Total \$	\$2,720,625
Average Spent	\$754.89
Spending Potential Index	73

Data Note: Consumer spending shows the amount spent on a variety of goods and services by households that reside in the area. Expenditures are shown by broad budget categories that are not mutually exclusive. Consumer spending does not equal business revenue. Total and Average Amount Spent Per Household represent annual figures. The Spending Potential Index represents the amount spent in the area relative to a national average of 100.

Source: Consumer Spending data are derived from the 2013 and 2014 Consumer Expenditure Surveys, Bureau of Labor Statistics. Esri.

Source: U.S. Census Bureau, Census 2010 Summary File 1. Esri forecasts for 2016 and 2021 Esri converted Census 2000 data into 2010 geography.

January 31, 2017