

# Growth & Development Trends: Annexation

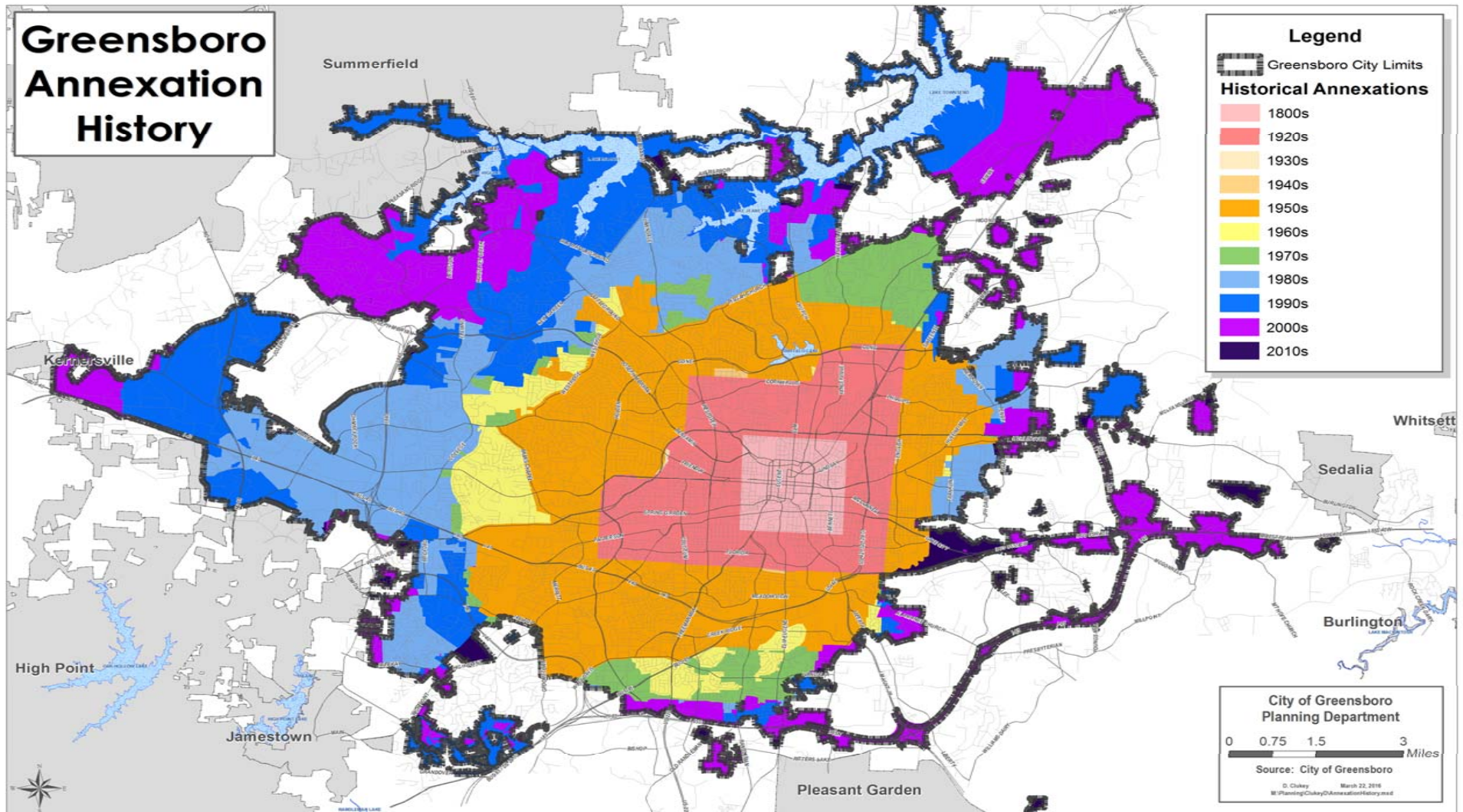
*May, 2016*

**Infrastructure Committee**

**Sue Schwartz, FAICP**



# Greensboro Annexation History



# 90 Years of Growth

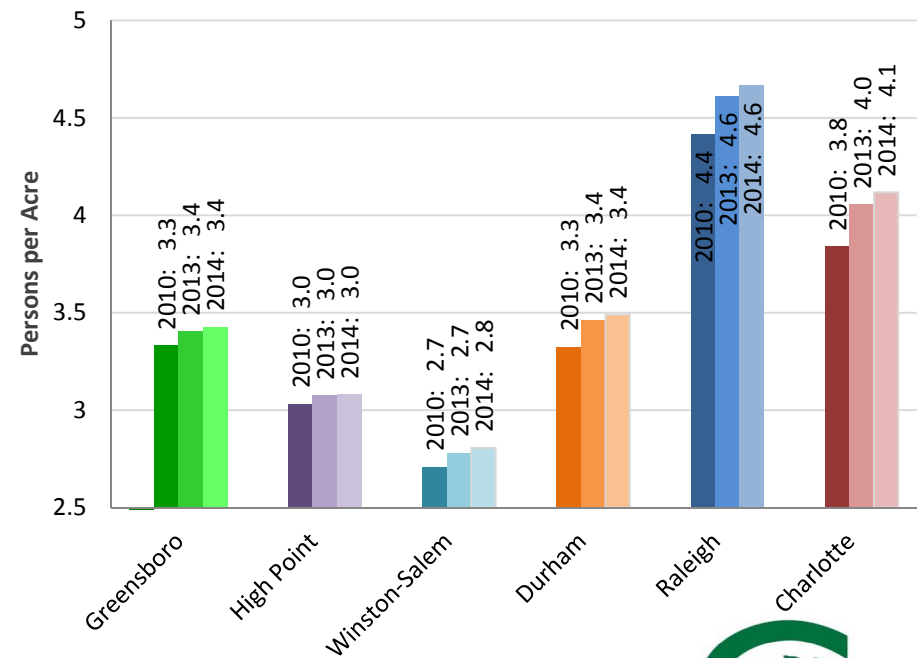
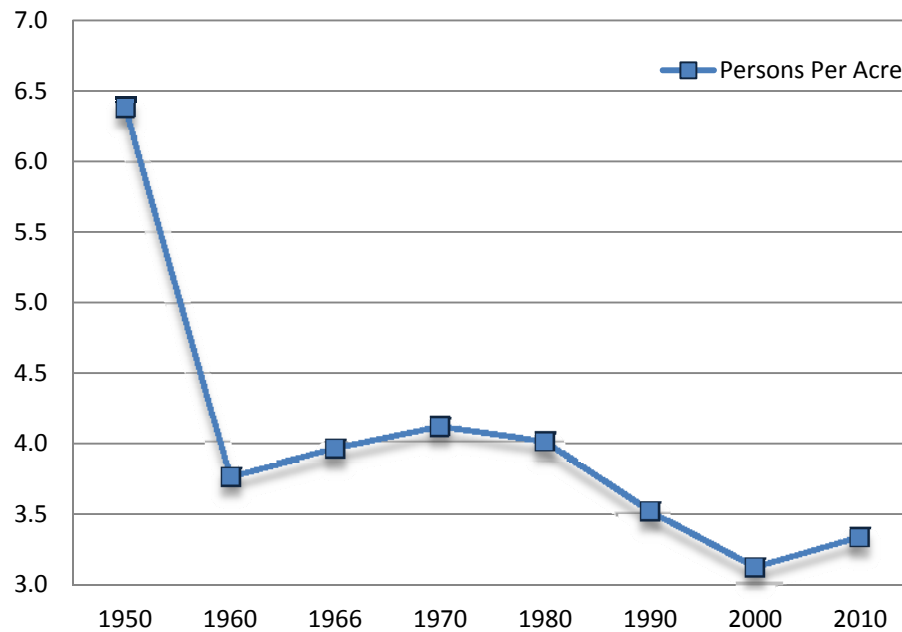
Time period	Acreage	Increase from previous time period	
		# of Acres	% Increase
1920s	11,402.0		
1930s	11,419.9	17.9	0.2%
1940s	11,505.9	86.0	0.8%
1950s	31,683.7	20,177.7	175.4%
1960s	35,009.0	3,325.3	10.5%
1970s	39,043.8	4,034.8	11.5%
1980s	51,355.1	12,311.3	31.5%
1990s	69,699.7	18,344.7	35.7%
2000s	84,240.4	14,540.7	20.9%
2010s	85,605.1	1,364.7	1.6%

Source: City of Greensboro GIS Data



Source: City of Greensboro GIS Data

# Density Matters



# Property Valuation Per Capita

