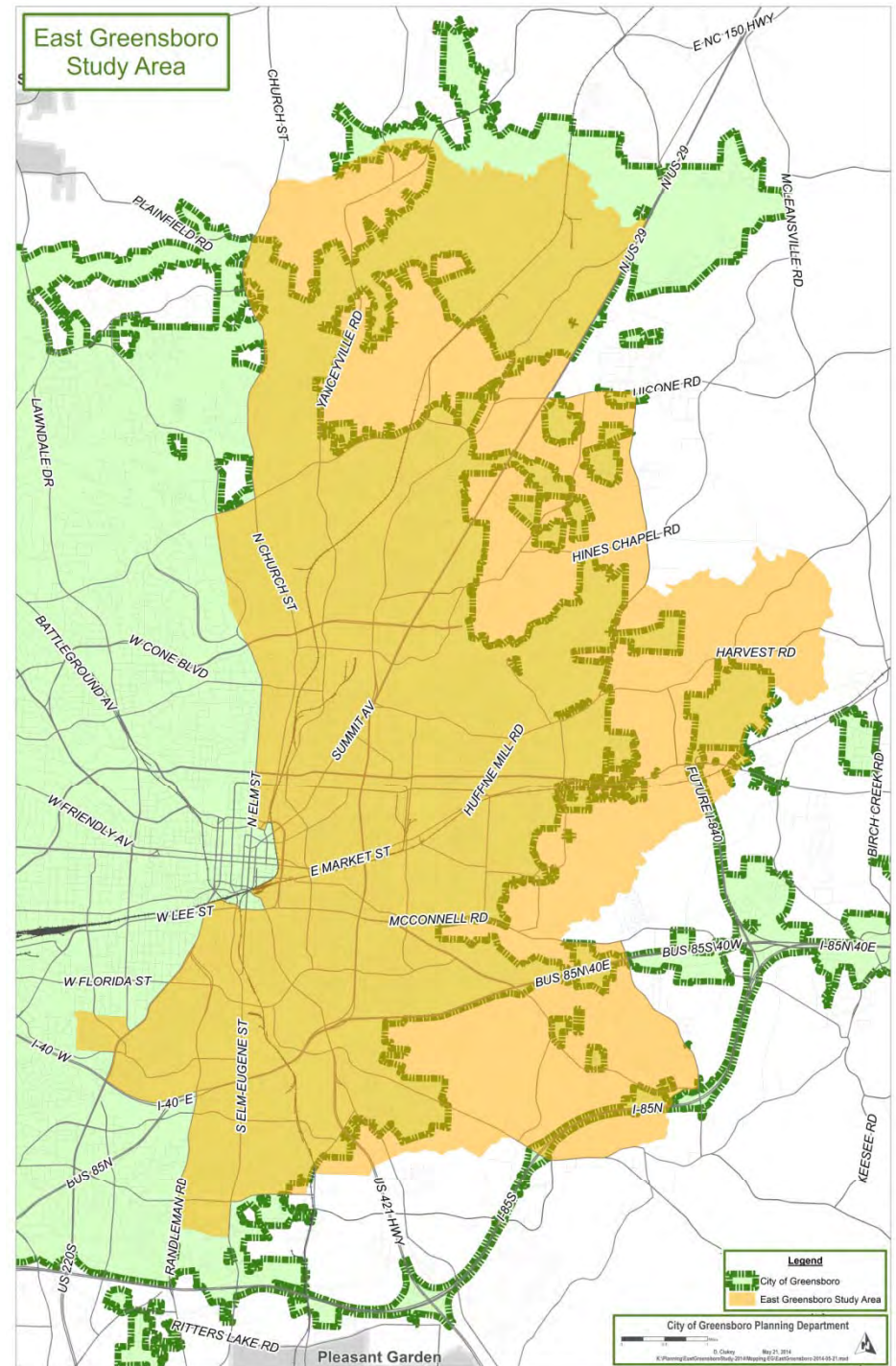


East Greensboro Study Committee

Findings & Recommendations
January, 2015



Overview

- Boundary & Data
- Focus Group Input
- Findings
- Recommendations

Housing in East Greensboro

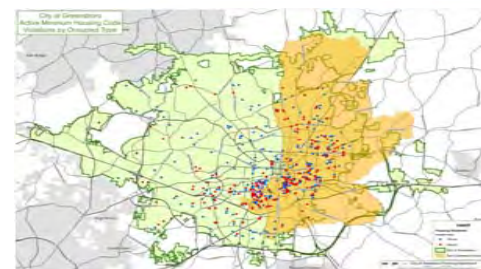
The City's median home value is 32% higher than East Greensboro's



Rent in East Greensboro (\$517) is less expensive than the City as a whole (\$611)

Greensboro East Greensboro
Median Contract Rent

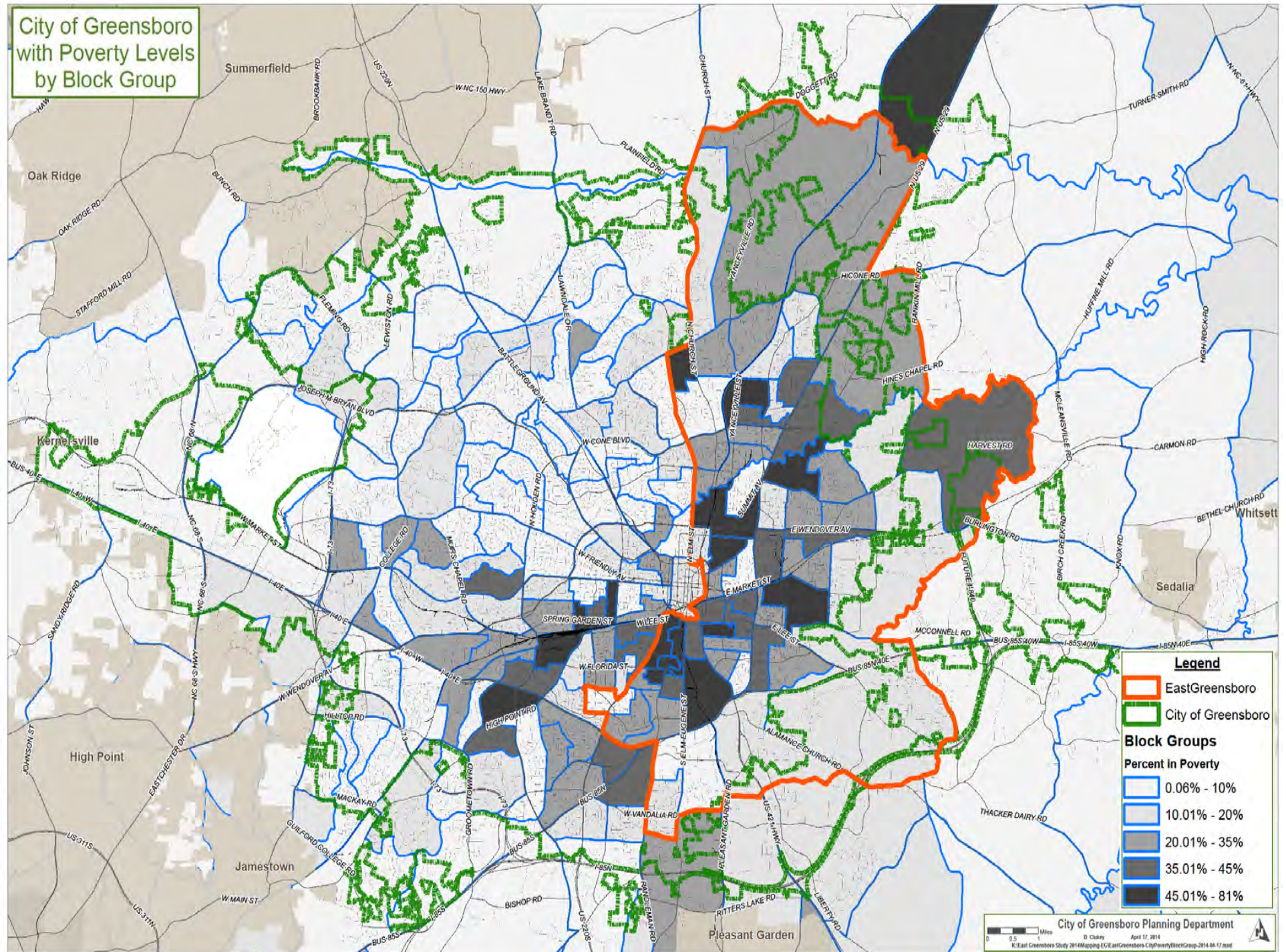
Average
Household
Size

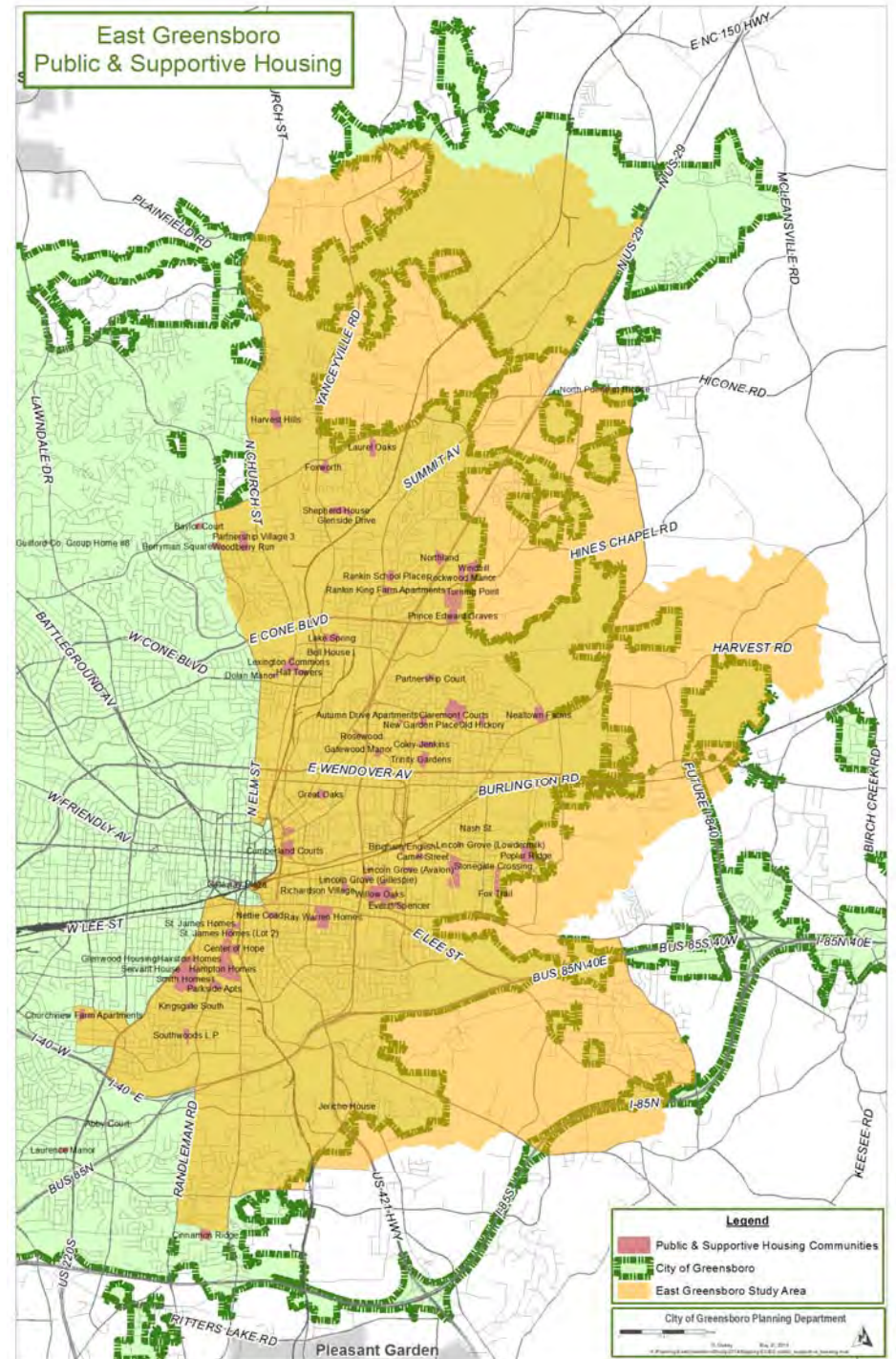
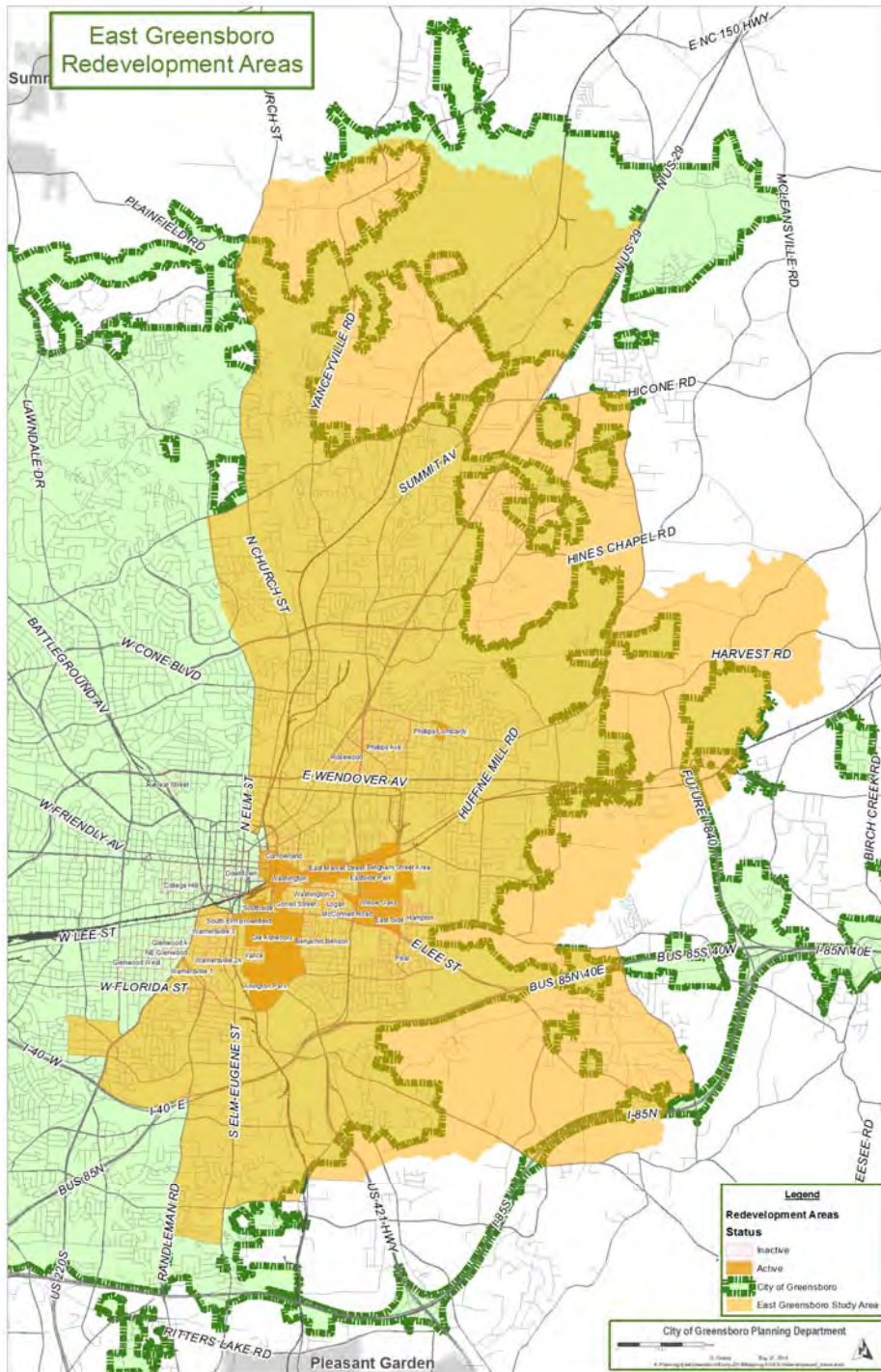


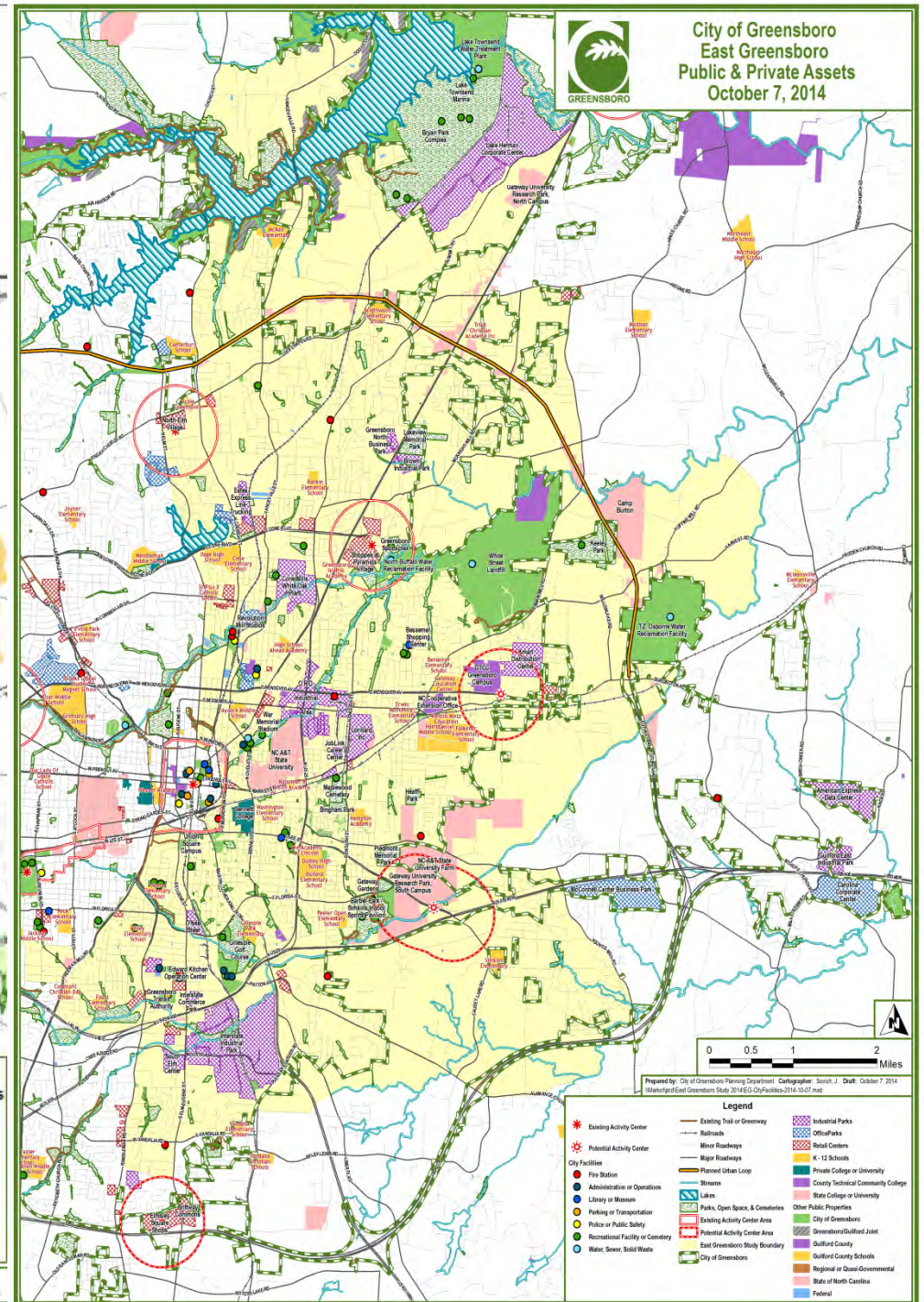
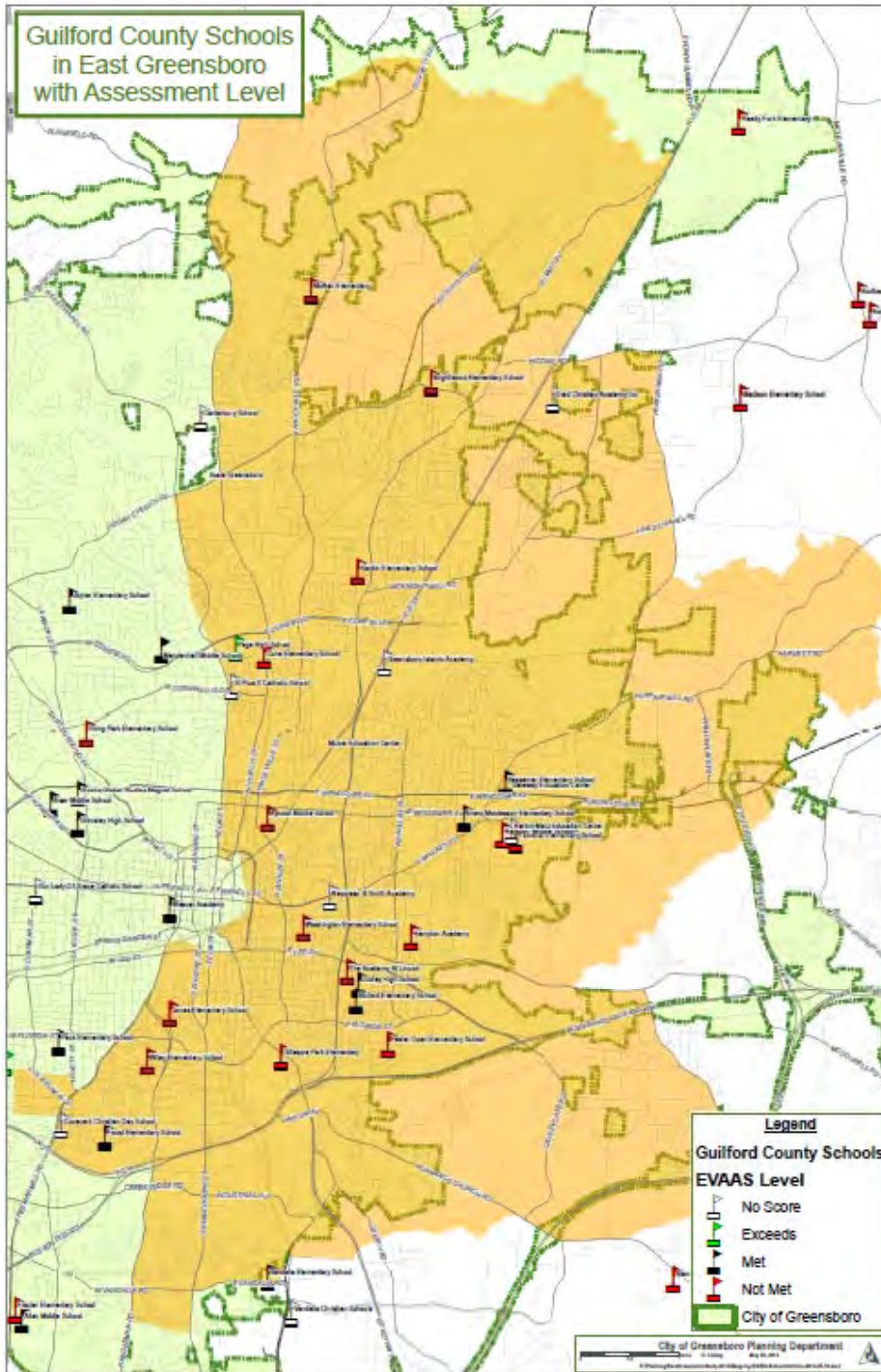
While East Greensboro represents 45% of the City's land area, 59% of housing violations are found in East Greensboro

Data Source: City of Greensboro Neighborhood Development

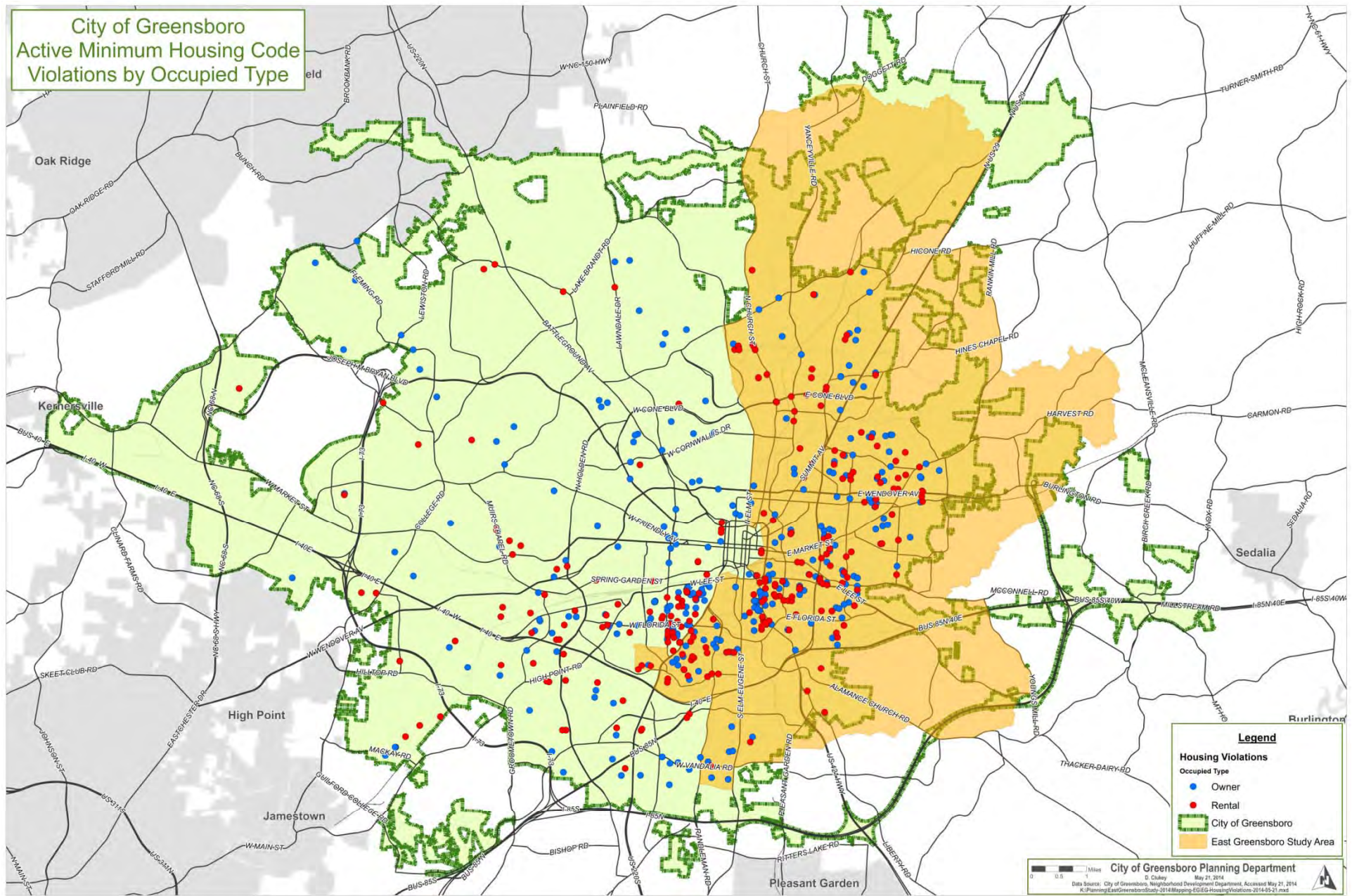
City of Greensboro with Poverty Levels by Block Group







City of Greensboro
Active Minimum Housing Code
Violations by Occupied Type



Legend

Housing Violations

Occupied Type

- Owner
- Rental

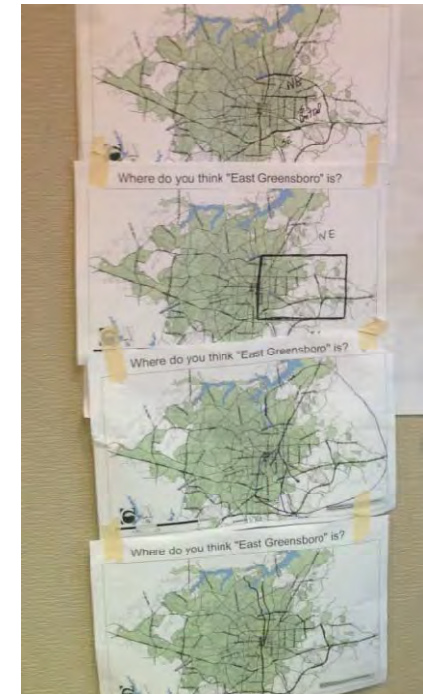
City of Greensboro

East Greensboro Study Area

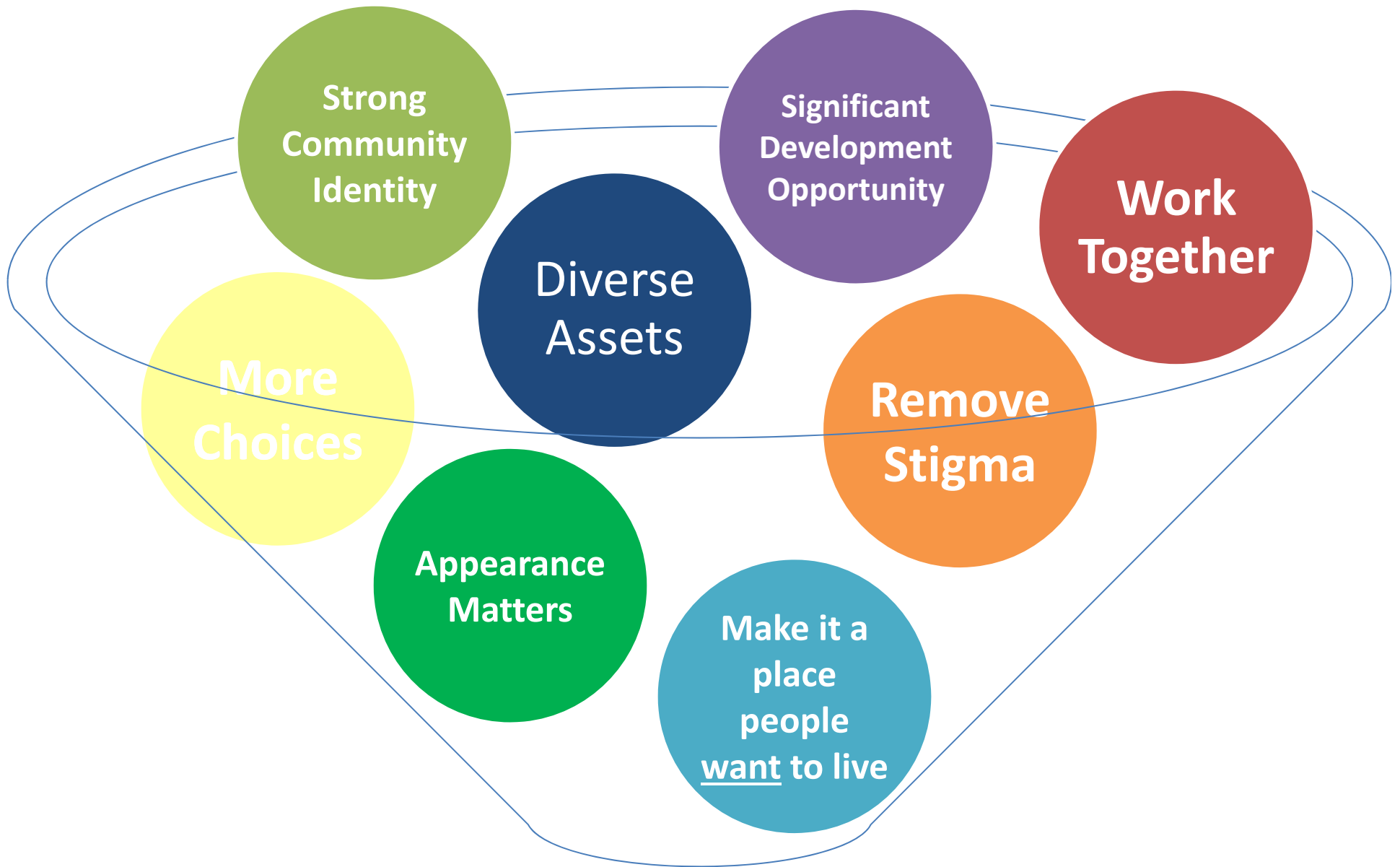
Focus Group Sessions

We asked...

- Where is East Greensboro?
- What are East Greensboro's...
 - Strengths
 - Opportunities
 - Aspirations
 - Results
- What strategies will make the aspirations a reality?



We Heard...



Key Input Themes



**Economic
Opportunity**



Education



**Community
Pride**



**Quality of
Life**

Economic Opportunity Recommendations

Increase Economic Activity

- Teen job training and placement
- Micro-lending
- Retail recruitment
- Shovel-ready sites
- Land banking



Education Recommendations

Develop partnership with GCS

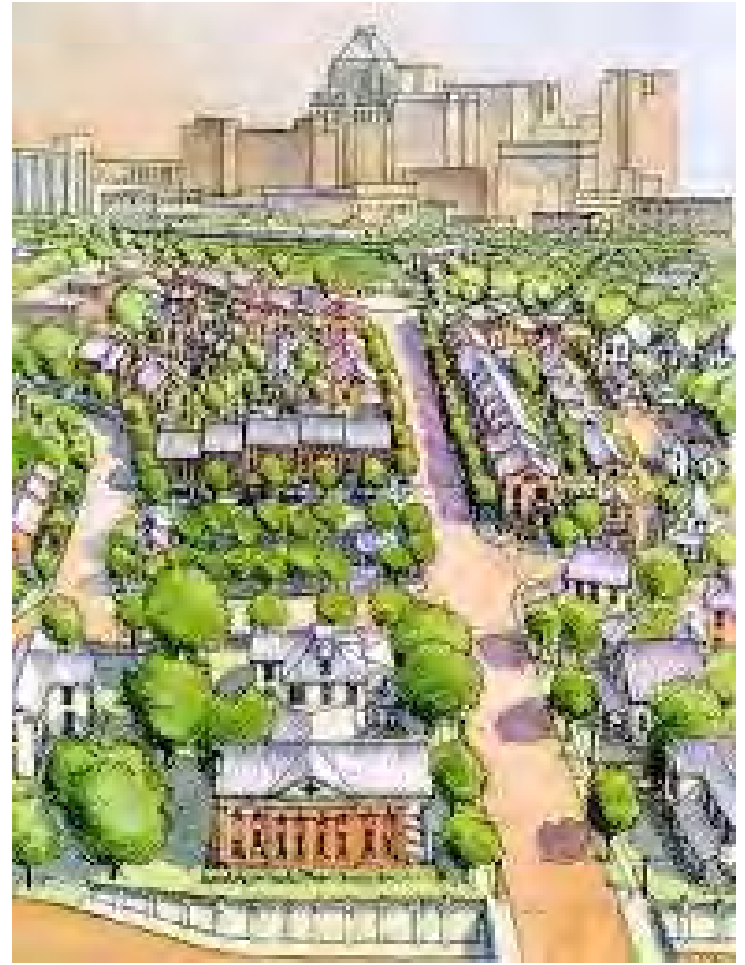
- Leverage educational assets
- Expand entrepreneurship training opportunities
- Eliminate disparity in educational outcomes



Community Pride Recommendations

Build Community

- Community-maker grant
- Organize community activities & events
- Beautify gateways & corridors
- Communication strategy
- Coordinate volunteers
- Build leadership capacity



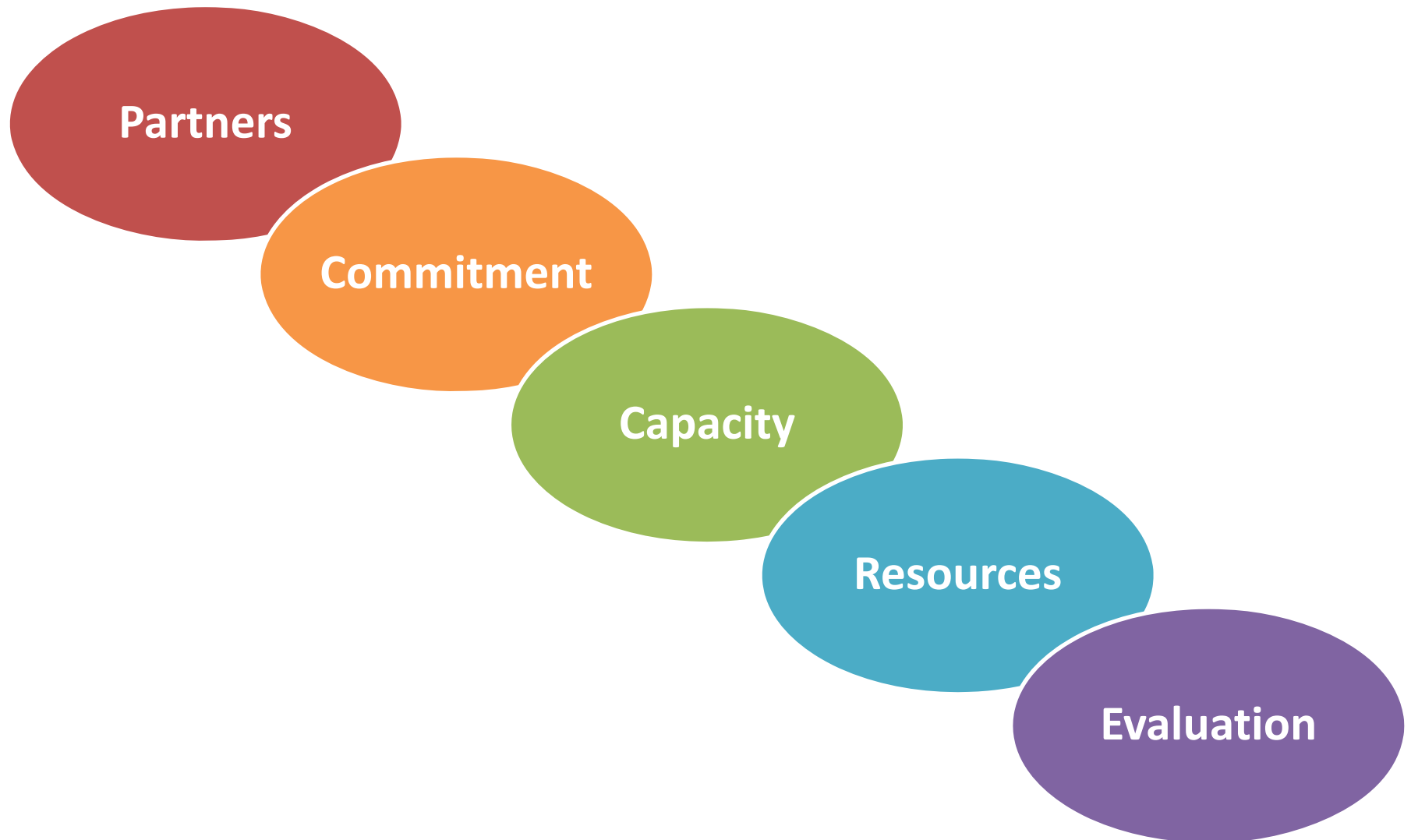
Quality of Life Recommendations

Change Perceptions

- Communication strategy
- Leverage assets
- 'Curb Appeal' program
- Temporary 'Better Block' installations
- Leadership awards and acknowledgements



Considerations



Next Steps

Who?

When?

How Much?

- Prioritize strategies
- Identify & recruit partners
- Establish roles & responsibilities
- Set implementation timeline
- Allocate resources



**Economic
Opportunity**



Education



**Community
Pride**



**Quality of
Life**