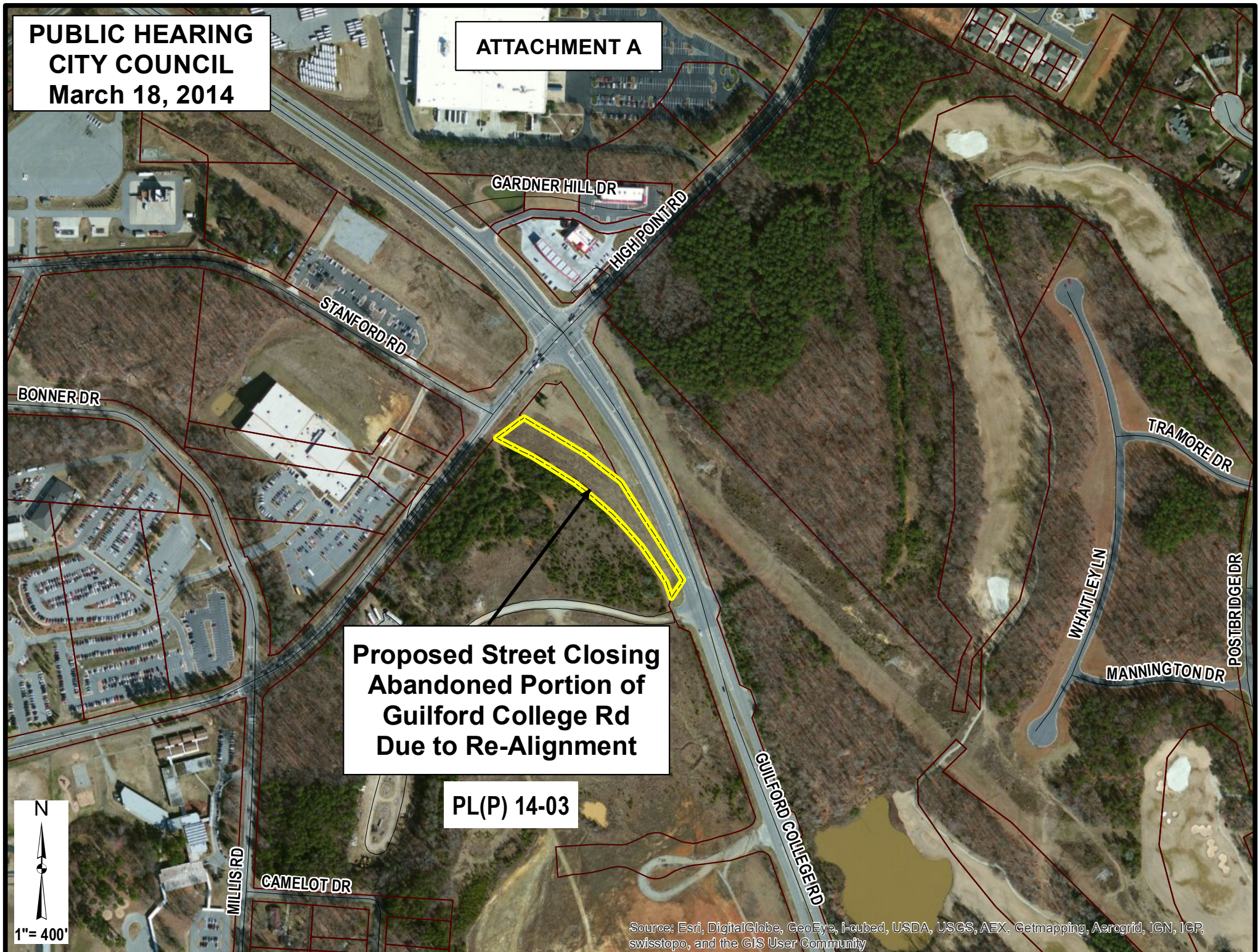


**PUBLIC HEARING
CITY COUNCIL
March 18, 2014**

ATTACHMENT A



**Proposed Street Closing
Abandoned Portion of
Guilford College Rd
Due to Re-Alignment**

PL(P) 14-03

Source: Esri, DigitalGlobe, GeoEye, i-cubed, USDA, USGS, AEX, Getmapping, Aerogrid, IGN, IGP, swisstopo, and the GIS User Community