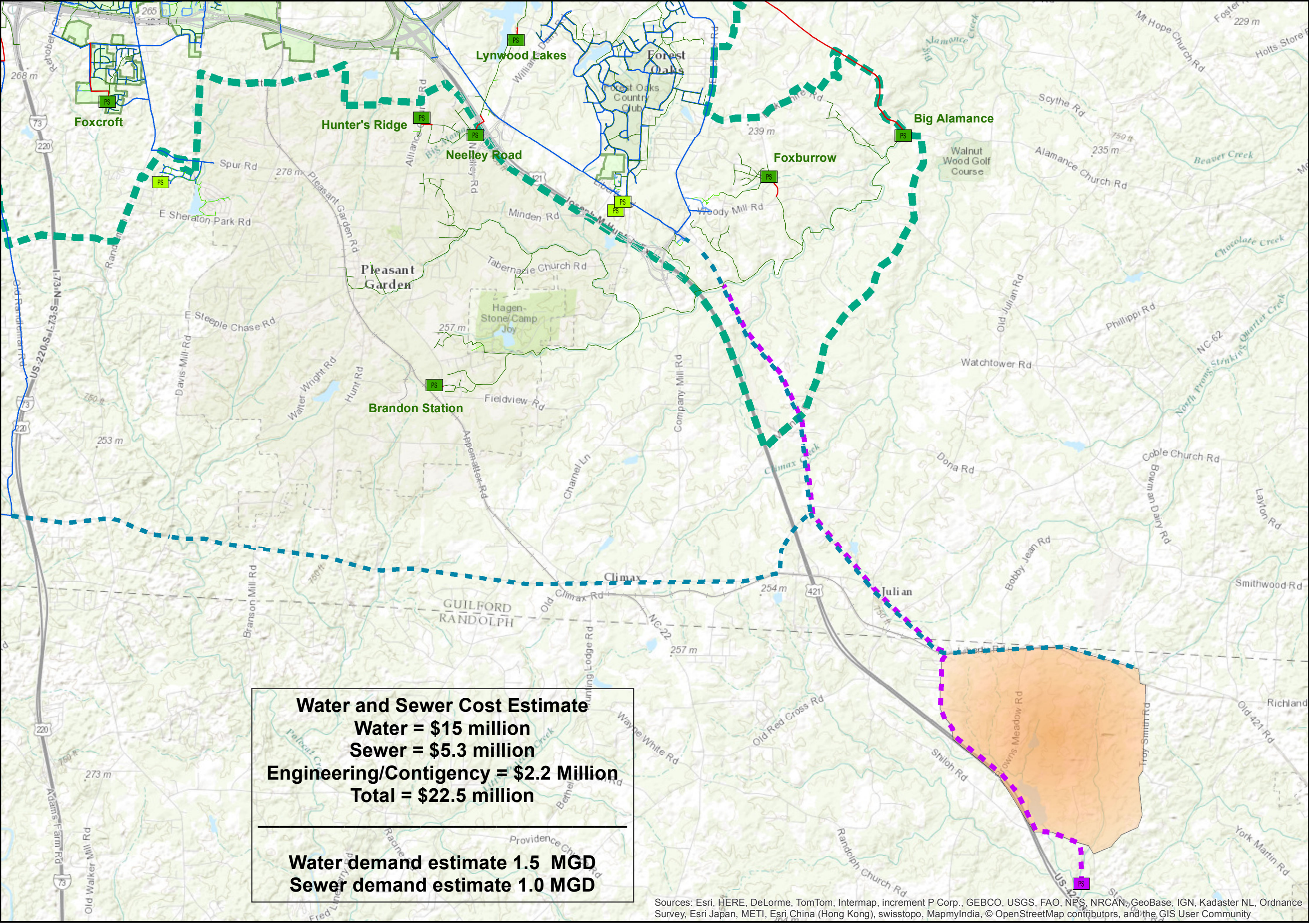




1 inch = 5,000 feet
Date: 2/24/2015

Water and Sewer Study For: Greensboro - Randolph Megasite



Water and Sewer Cost Estimate
Water = \$15 million
Sewer = \$5.3 million
Engineering/Contingency = \$2.2 Million
Total = \$22.5 million

Water demand estimate 1.5 MGD
Sewer demand estimate 1.0 MGD

- LEGEND**
- Proposed 16" Water Main
 - Proposed Lift Station
 - Proposed 16" Force Main
 - Greensboro-Randolph Mega Site
 - Lift Stations**
 - Public
 - Private
 - Sewer Lines**
 - Private Sewer Line
 - Public Sewer Line
 - Force Mains**
 - Private Force Main
 - Public Force Main
 - Pressurized Mains**
 - Private Water Line
 - Public Water Line
 - Railroads
 - Water Sewer Boundary
 - Greensboro City Limit

Sources: Esri, HERE, DeLorme, TomTom, Intermap, increment P Corp., GEBCO, USGS, FAO, NPS, NRCAN, GeoBase, IGN, Kadaster NL, Ordnance Survey, Esri Japan, METI, Esri China (Hong Kong), swisstopo, MapmyIndia, © OpenStreetMap contributors, and the GIS User Community