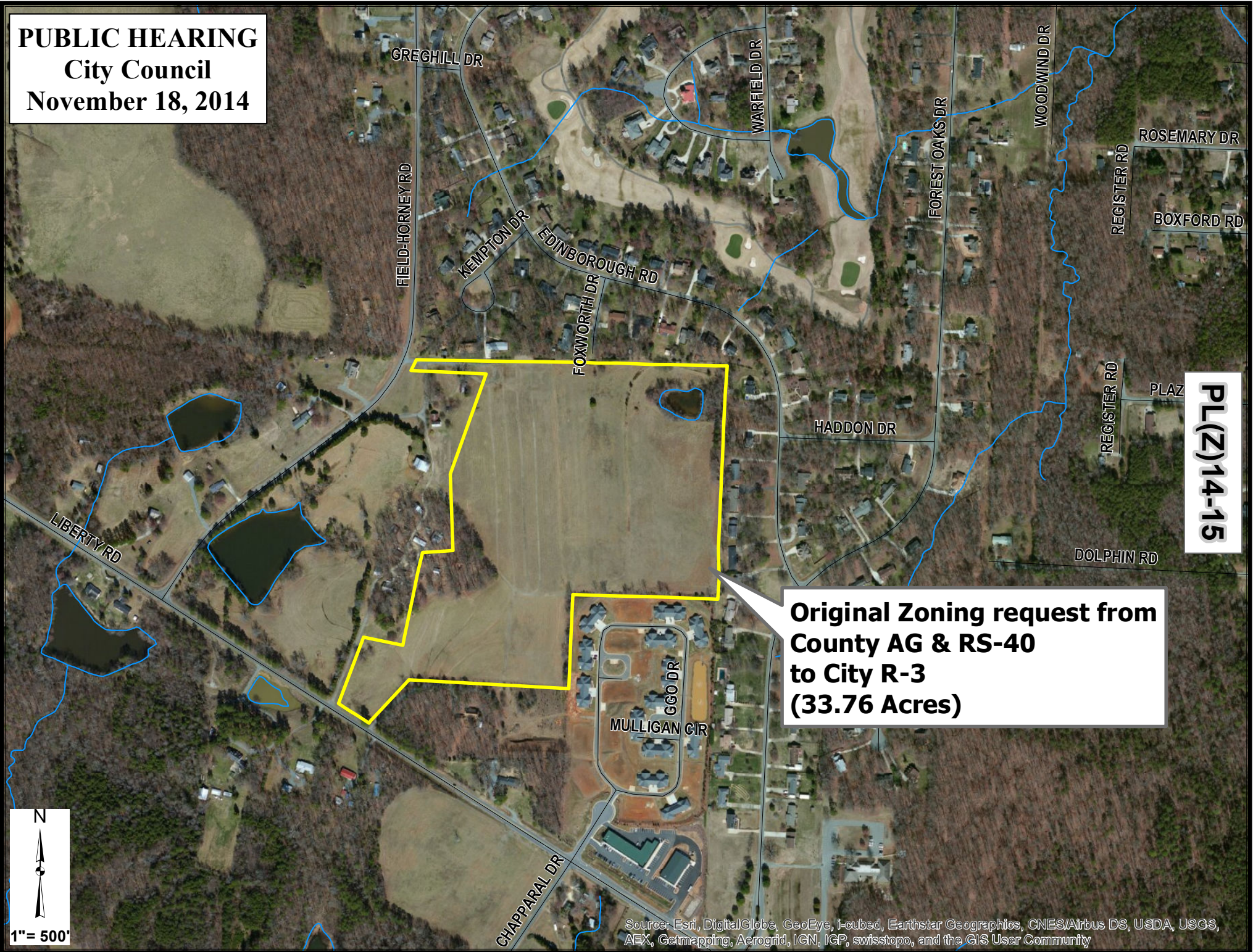


**PUBLIC HEARING**  
**City Council**  
**November 18, 2014**



**PL(Z)14-15**

**Original Zoning request from  
County AG & RS-40  
to City R-3  
(33.76 Acres)**

**1" = 500'**

Source: Esri, DigitalGlobe, GeoEye, i-cubed, Earthstar Geographics, CNES/Airbus DS, USDA, USGS, AEX, Getmapping, Aerogrid, IGN, IGP, swisstopo, and the GIS User Community