
Connections 2025 Comprehensive Plan Growth Strategy Map Amendment

City Council Public Hearing • April 7, 2015

Connections 2025

Growth Strategy Map

- ▶ Growth Tiers
- ▶ Reinvestment Areas and Corridors
 - ▶ Identifies priority public/private investment opportunities
 - ▶ Encourages compatible infill
 - ▶ Guides Urban Development Investments

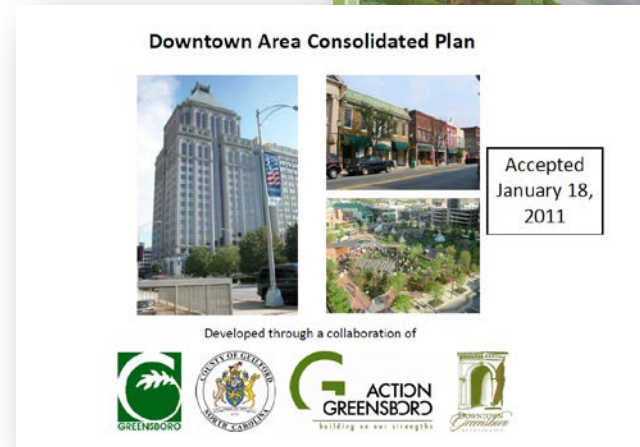


Proposed Revisions

- ▶ Central Gateway Corridor Plan
- ▶ Downtown Reinvestment Area
- ▶ Requested extension along new Gate City Boulevard

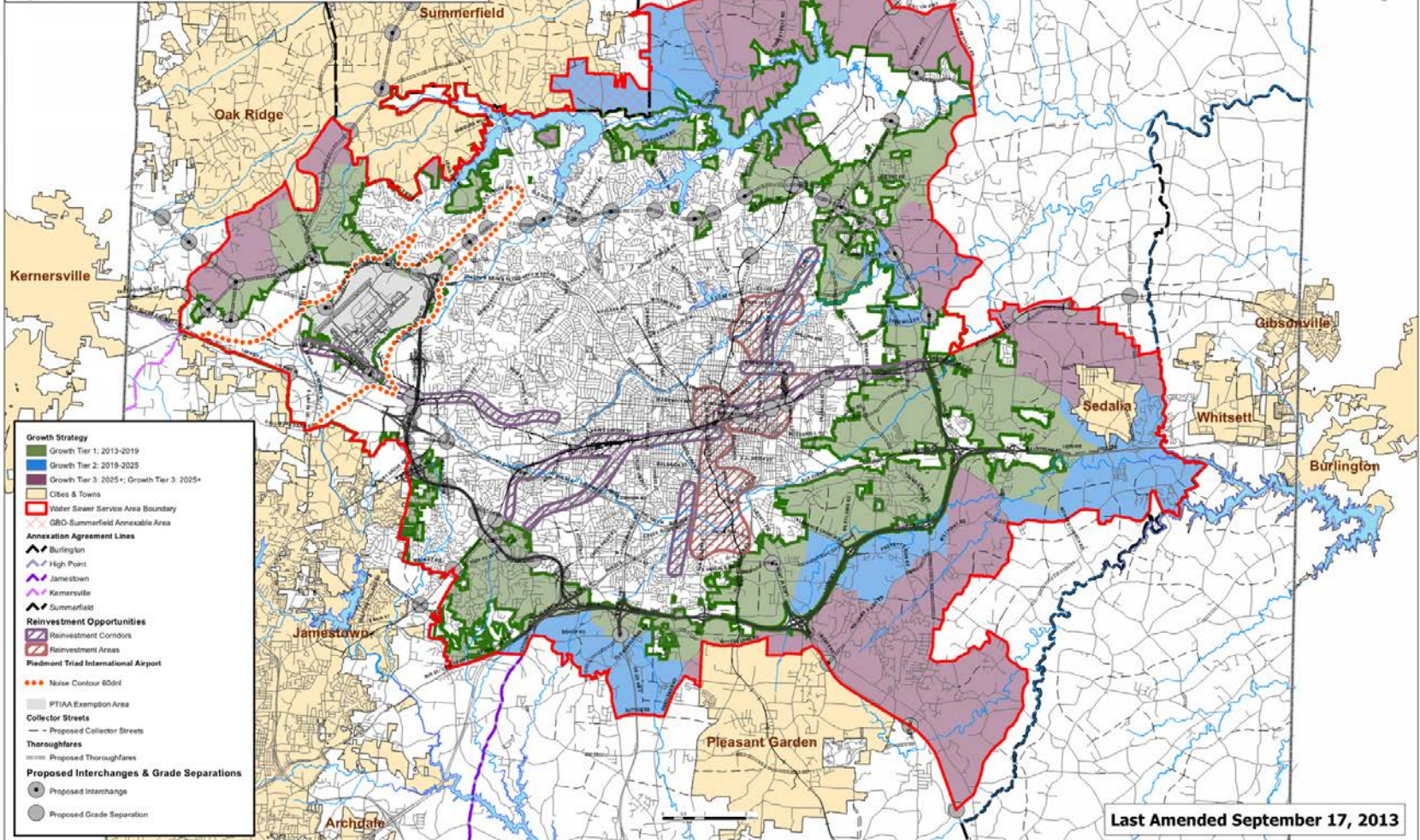
Existing: 16.4 square miles

Proposed: 20.4 square miles



Growth Strategy Amendment

Figure 4.3

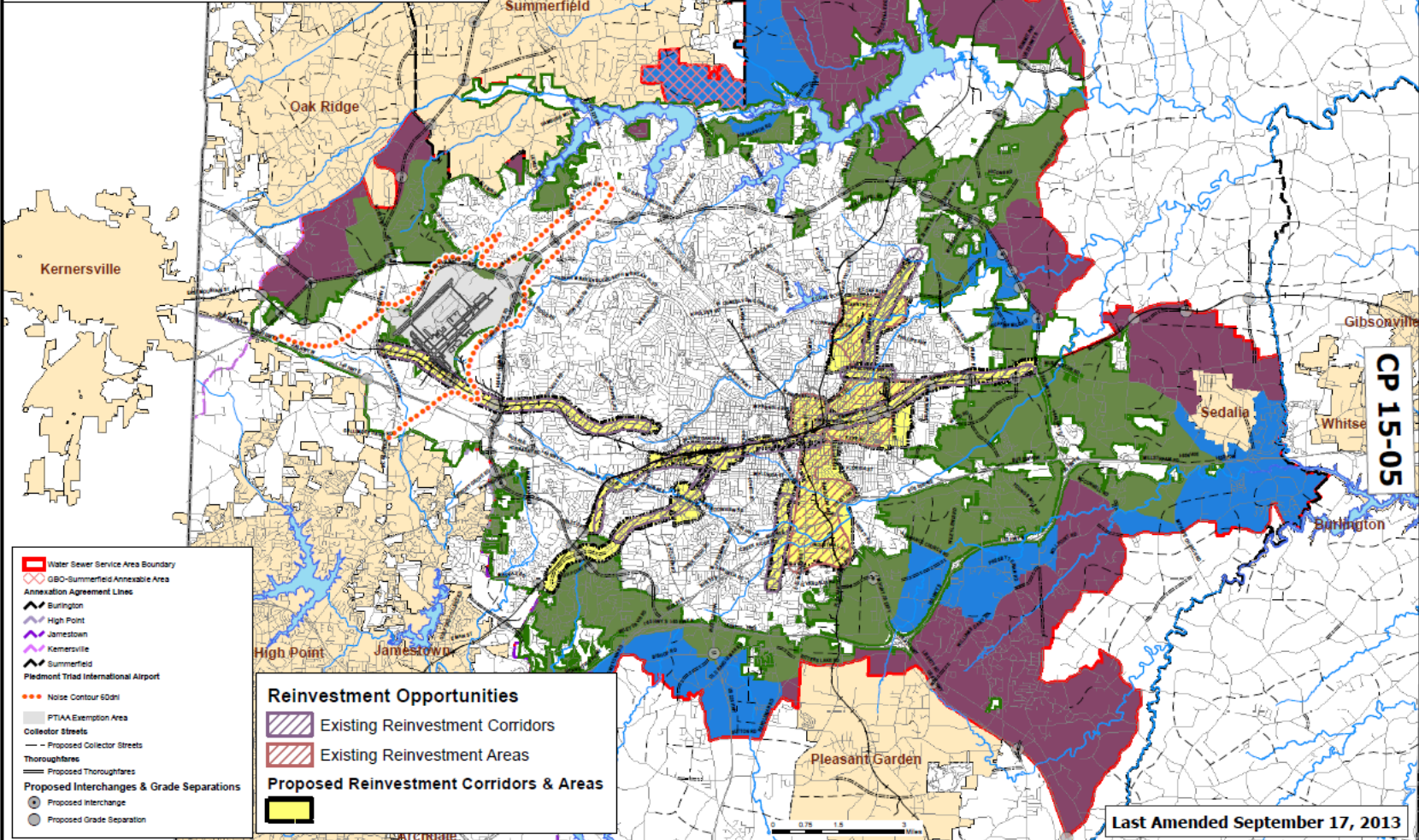


Last Amended September 17, 2013



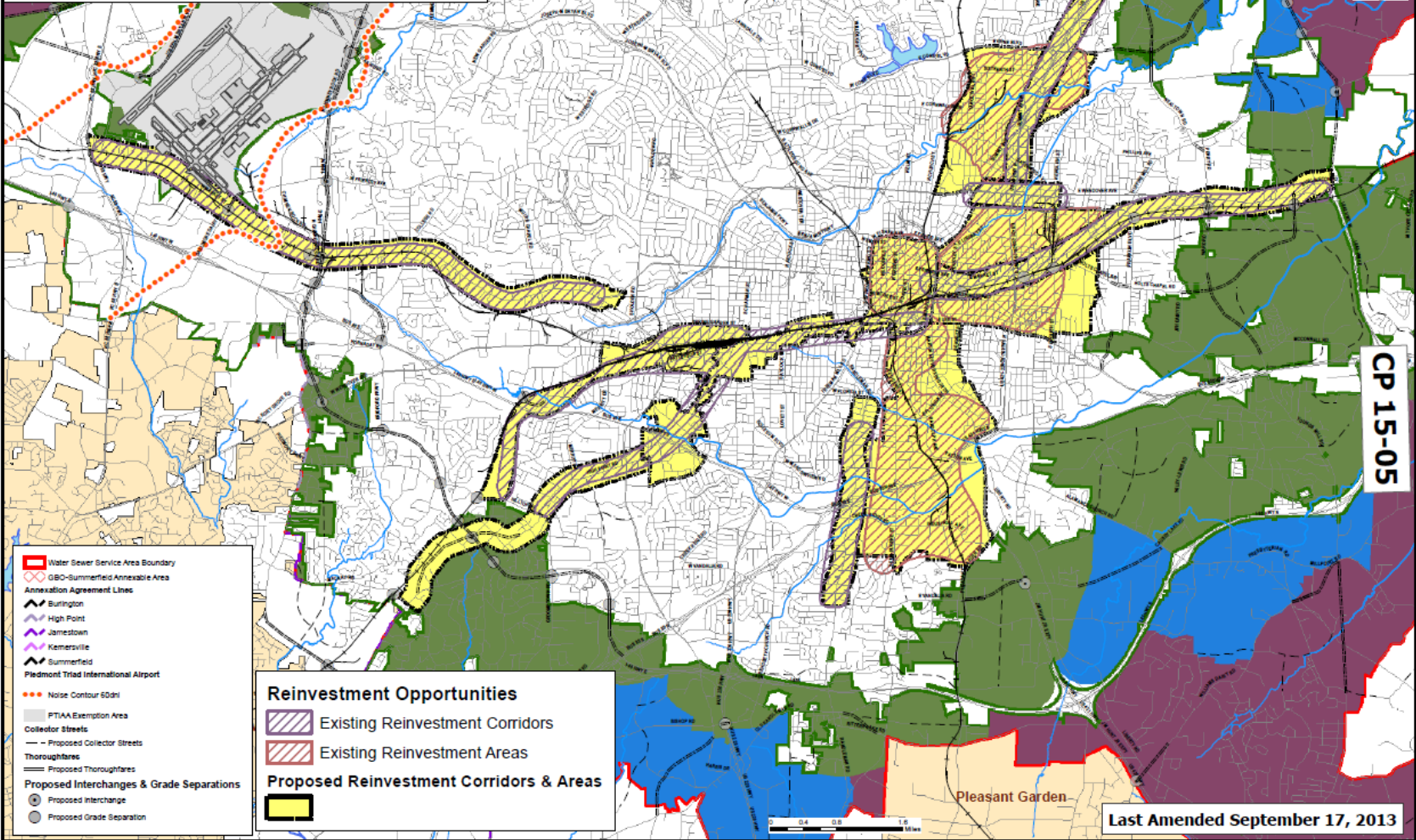
Growth Strategy Amendment

Figure 4.3



Growth Strategy Amendment

Figure 4.3



CP 15-05

Last Amended September 17, 2013



Recommendation

- ▶ Planning Board March 18th
 - ▶ unanimous recommendation
- ▶ Staff recommends approval