

REAL ESTATE/EQUITIES
WEAVER INVESTMENT COMPANY
WHW PARTNERS CORPORATION
WEAVER RESOURCES COMPANY
WEAVER CAPITAL CORPORATION
WEAVER AFFILIATES
FRANKLIN STREET PARTNERS
QUAINTANCE-WEAVER
RESTAURANTS & HOTELS



OPERATING COMPANIES
PELLA CAROLINA
PELLA TENNESSEE - NASHVILLE
PARK CENTER MANAGEMENT CO.
STONEY CREEK GOLF CLUB
HARVELL DOORS & CABINETRY
BROUN-WEAVER - ATLANTA
KMW BUILDERS
PHILANTHROPIC
WEAVER FOUNDATION

September 18, 2015

Steve Galanti, Manager
City of Greensboro Planning Department
P. O. Box 3136
Greensboro, NC 27402

Re: Stoney Creek Sewer and Water

Dear Steve:

I am writing to request that the Greensboro City Council approve access to City sewer and water for property owned by Stoney Creek Properties LLC as shown on the attached. It is our understanding that this approval is necessary to provide sewer and water to land that has not yet been annexed by the City of Greensboro.

Stoney Creek Properties LLC is an affiliate of Weaver Investment Company, and it was Weaver that constructed and paid for the extension of sewer under Interstate 40 in the early 1990's at a cost of well over \$1,000,000 (the tunnel under the interstate was dug by hand). Weaver also paid for the extension of water lines from the intersection of I-40 and Rock Creek Dairy Road to U.S. 70, and then easterly on U.S. 70 along the frontage of our property as shown.

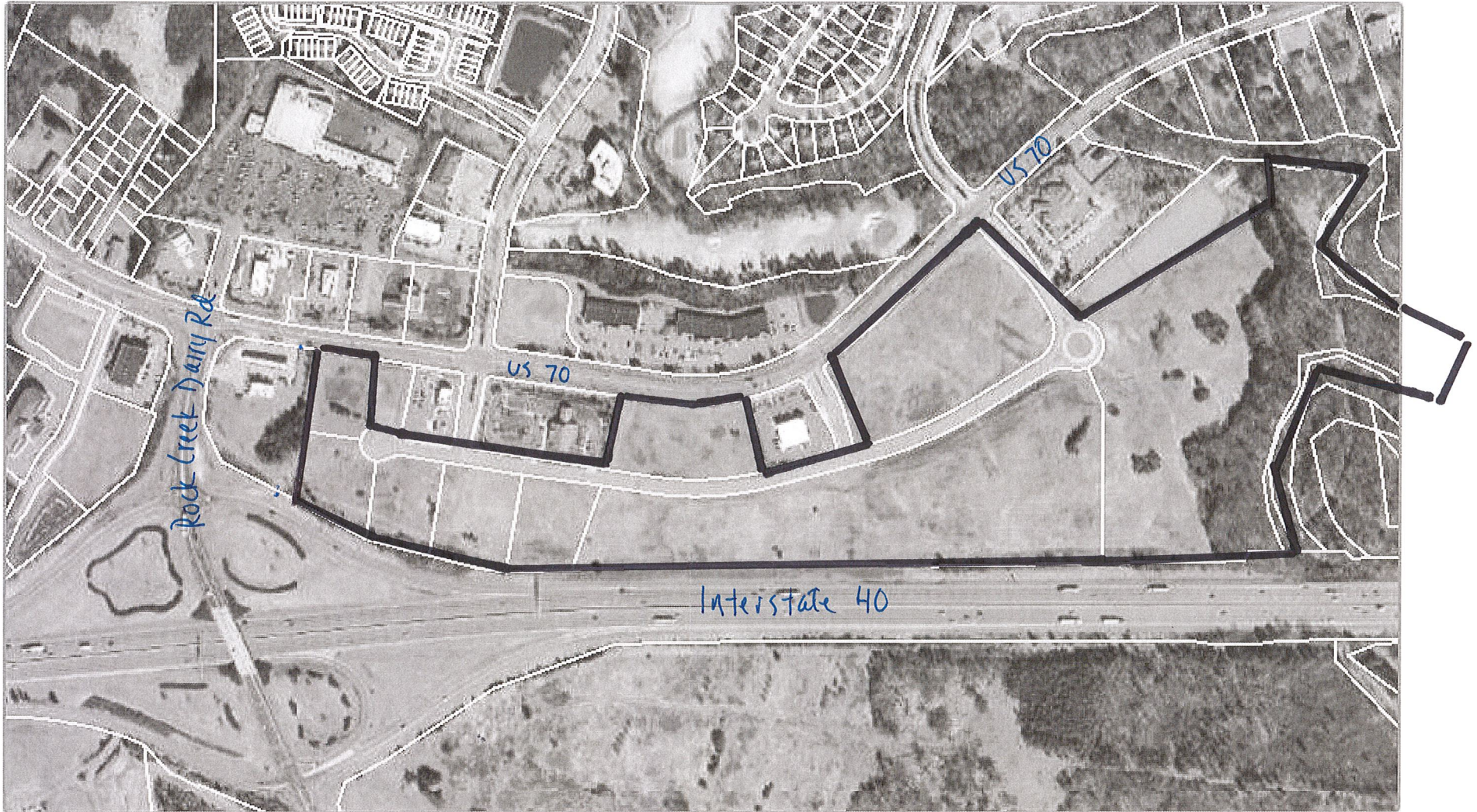
Since bringing sewer and water to this property, a number of needed businesses have opened their doors including LeBauer HealthCare, Midtown Pharmacy and Employees' State Credit Union. Not only has this infrastructure served the Stoney Creek area, but it made possible the construction of other projects north of I-40 including Eastern Guilford Middle School and High School.

In light of our investment in this area and the opportunities it has provided, we request approval of access to sewer and water for the remainder of our property as shown at the attached. Thank you, and please let me know if you have any questions.

Sincerely,

A handwritten signature in blue ink that reads 'Robert S. Houghton'.

Robert S. Houghton
Vice President



Disclaimer: While every effort is made to keep information provided over the internet accurate and up-to-date, Guilford County does not certify the authenticity or accuracy of such information. No warranties, express or implied, are provided for the records and/or mapping data herein, or for their use or interpretation by the User.

Map Scale
1 inch = 502 feet
9/17/2015

Stoney Creek Properties, LLC
outlined in black
Approximately 53 acres