



Presentation for the City of Greensboro

- **Who we are**
- **What we do**
- **How we do it**
- **Accelerator Program**
- **Accelerator Participants**
- **Proposed Budget**
- **Request for Funding**

Who we are:

- Newest business unit of Greensboro Partnership

What we do:

- Create pathways for success of entrepreneurial businesses

1000 Ideas

Moving forward to the next step!

Community Outreach

Consultative Sessions

Intensive Mentoring

Funding

Slam!

Test your idea
and get feedback

**Strategy
Scrub**

Focus your plan

**Pitch
Prep**

Know your
audience

**Triad
Startup
Lab**

A Business Accelerator

**CAPITAL!
CONNECTS!**

CCEDU!

12x

Advisors and Mentors

12x

Advisors and Mentors

2x

Advisors and Mentors

2x

1000 Ideas connects entrepreneurs at all stages with the power to move their ideas forward to the next step and become part of a vital community of peers, resources, mentors and champions.

 **Greensboro Partnership**
Entrepreneur Connection

Acceleration Program

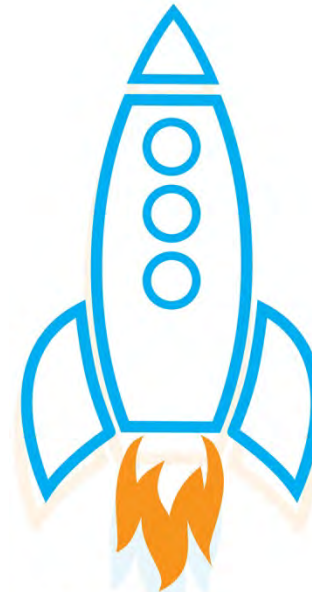
- **Goal is to prepare startups for launch or early stage companies for acceleration**
- **2 programs per year (Sessions A + B)**
- **Each session is approximately 12 weeks duration**
- **~20 start-ups and early stage companies with most growth potential in high value jobs selected for each program**
- **Intensive mentoring, advising and coaching**
- **Focused educational experiences and customer testing**
- **Plan for next steps beyond the accelerator program such as Co-working space, Capital Connects, Nussbaum incubator**



20 STARTUPS, 9 INTERNS, 8 MENTORS AND 1 TECHNICAL ADVISOR

Acceleration Program Emphasis

- **Lean Startup Methods**
- **Minimum Viable Product (MVP) = test models**
- **Customer Validation Testing**
- **Remove Uncertainty**
- **Validate Assumptions**



**TRIAD
STARTUP LAB**

Accelerator Participants

	Piedmont	Greensboro
	Triad	Partnership
	Partnership	Group A
	<u>2013</u>	<u>2014</u>
<u>Gender:</u>		
Females	36%	67%
Males	64%	33%
<u>Race:</u>		
African-American	0%	33%
Asian	0%	8%
Caucasian	100%	58%

Proposed Accelerator Program Budget

<u>Revenue:</u>	
Foundation Grants	\$ 100,000
Total Grant Revenue	<u>\$ 100,000</u>
<u>Expenses:</u>	
Program Expenses*	\$ 188,000
General & Administrative Expense	12,000
Total Expenses	<u>\$ 200,000</u>
Net Margin	<u>\$ (100,000)</u>
*Includes paid staff, stipends for lead mentors/advisors/coaches, paid student internships, supplies/materials, WiFi, co-working space packages, marketing	

Request for Accelerator Funding Support

1:1 match up to \$100,000 for 2014

Questions?

Thank you