

Flood Hazard Minimization Efforts



Latham Photo Nelson Kepley/News & Record

January 19, 2021

Water Resources Department



Flood Hazards

- **Hurricanes**
- **Historic Rains**
- **Historic Flooding**
 - **Homes**
 - **Roads**
 - **Businesses**

Year	Rainfall Total
2018	64.11"
2020	63.36"
2003	62.32"
1908	56.59"
1975	56.51"

The screenshot shows the WFMY NEWS 2 website header with navigation links for News, Weather, Sports, Connect, and Watch. Below the header is a secondary navigation bar with links for '2 BE COUNTED', 'VOTER GUIDE', 'CORONAVIRUS', '2 WANTS TO KNOW', and 'VERIFY'. The main content area features a 'WEATHER' section with the headline 'One of the wettest years in Triad history; 2020 on pace to finish Top 5'. A sub-headline reads 'The Triad is already Top 10 with plenty of time left to go, and soaking rain is on the way this week.'

Year	2009	2010	2011	2012	2013	2014	2015	2016	2017	2018	2019	2020
Drainage	129	199	250	239	254	225	326	358	327	278	453	403

Hazard Mitigation

Overview

- Floodplain Ordinance Update
- Flow Monitoring
- Watershed Studies
- Infrastructure Improvements
- Ongoing Efforts
- Challenges & Opportunities



South Buffalo Creek

Flood Damage Prevention Regulations

Ordinance Changes

- Increase the elevation of the structure from one foot to two feet of freeboard
- Decrease Substantial damage and improvement

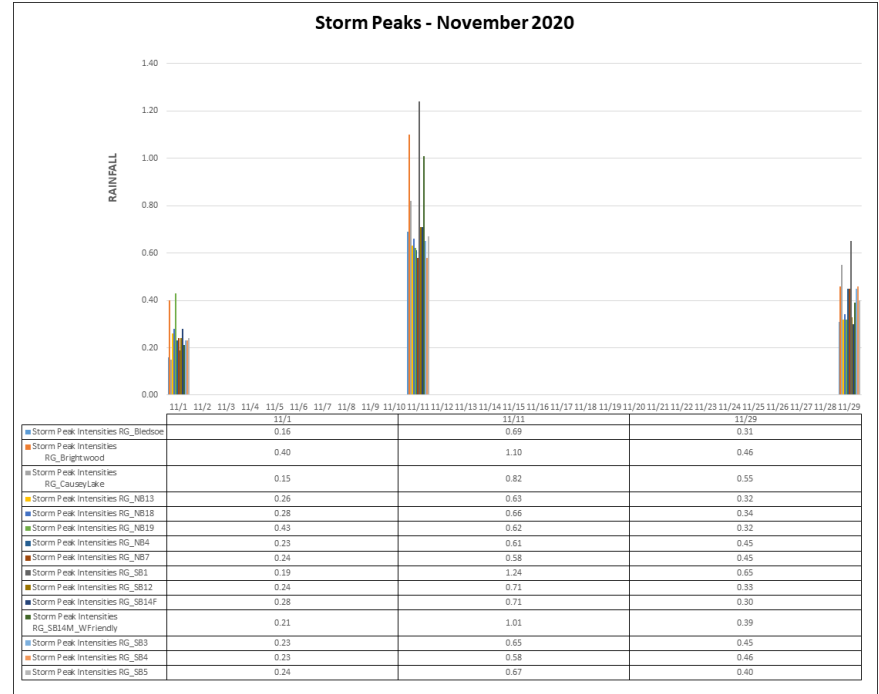
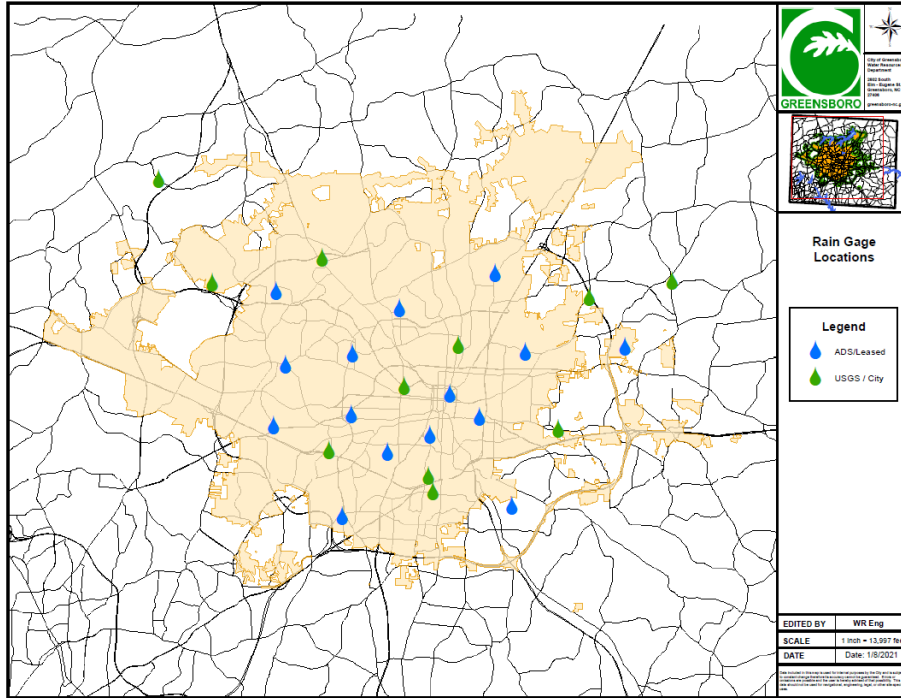
National Flood Insurance Program and Community Rating System (CRS)

- Resilience



Latham Park Manor, Photo by Lynn Hey/News & Record

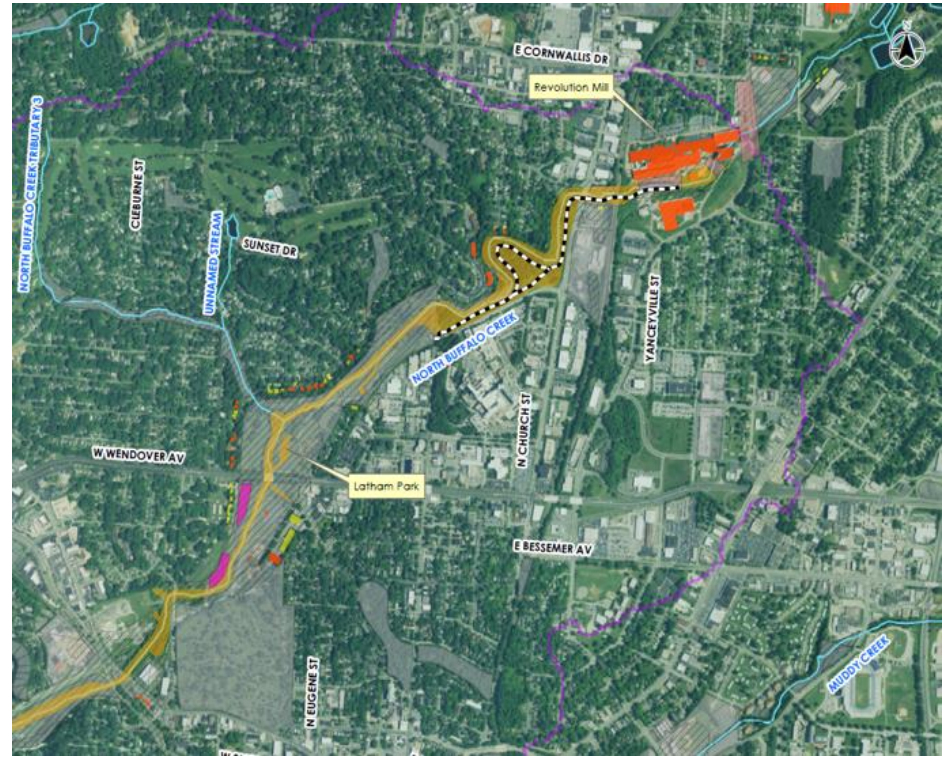
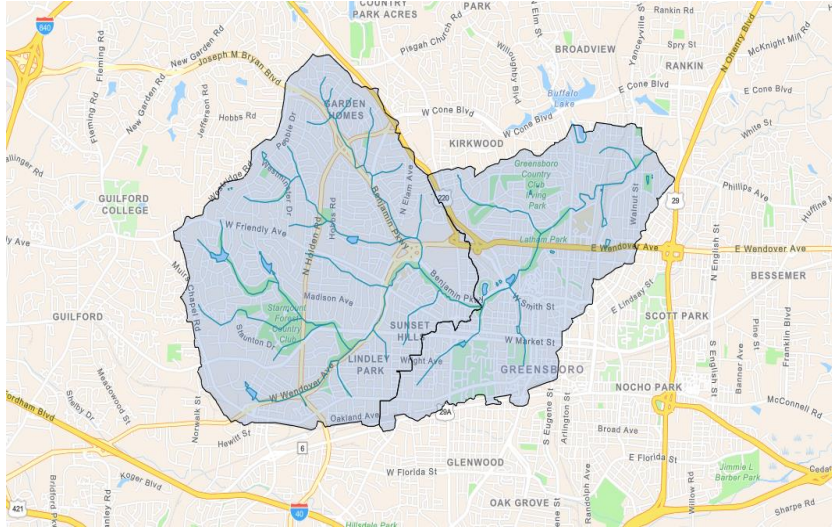
Flow Monitoring - Collection System Monitoring Services



Watershed Modeling

Watershed Studies & Models

- Future conditions analysis
- Alternatives to reduce risk

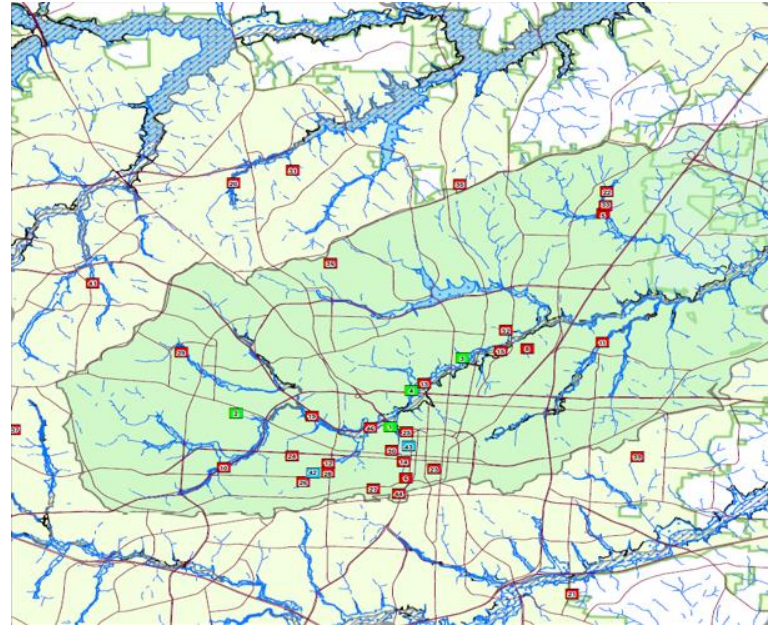


Infrastructure Improvements

Stream Projects



Pipes & Culverts



Ongoing Efforts, Challenges and Opportunities

- **Ongoing Efforts:**
 - Property Acquisition Program
 - FEMA Grant Support
 - Comprehensive Plan
- **Challenges:**
 - Climate change
 - More frequent/severe storms
 - New flood maps
 - More structures in floodplain
 - Regulations
- **Opportunities:**
 - More protective regulations
 - Green infrastructure
 - Partnering and outreach

