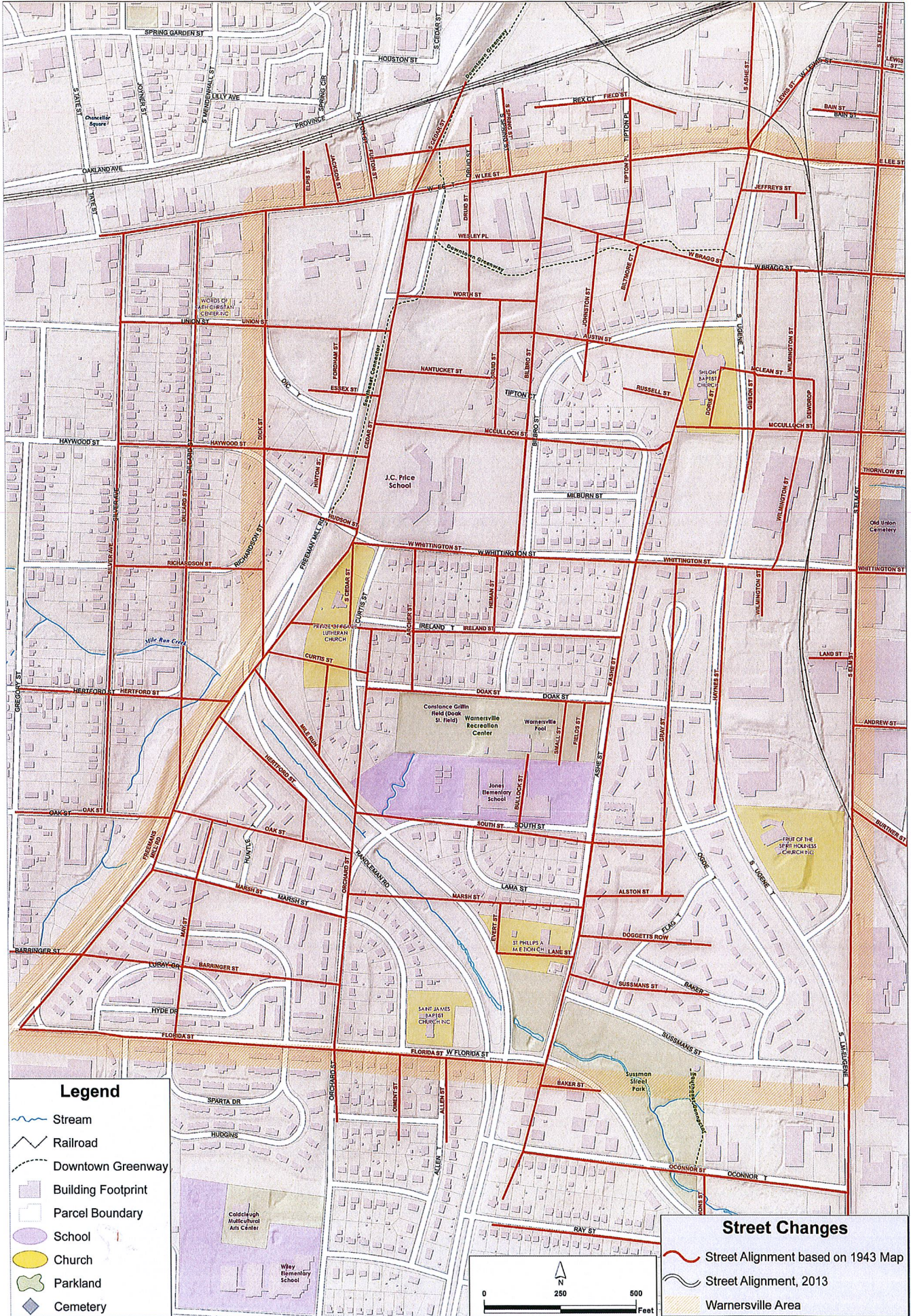


# Detailed Street Map of Warnersville Neighborhood

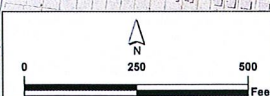


## Legend

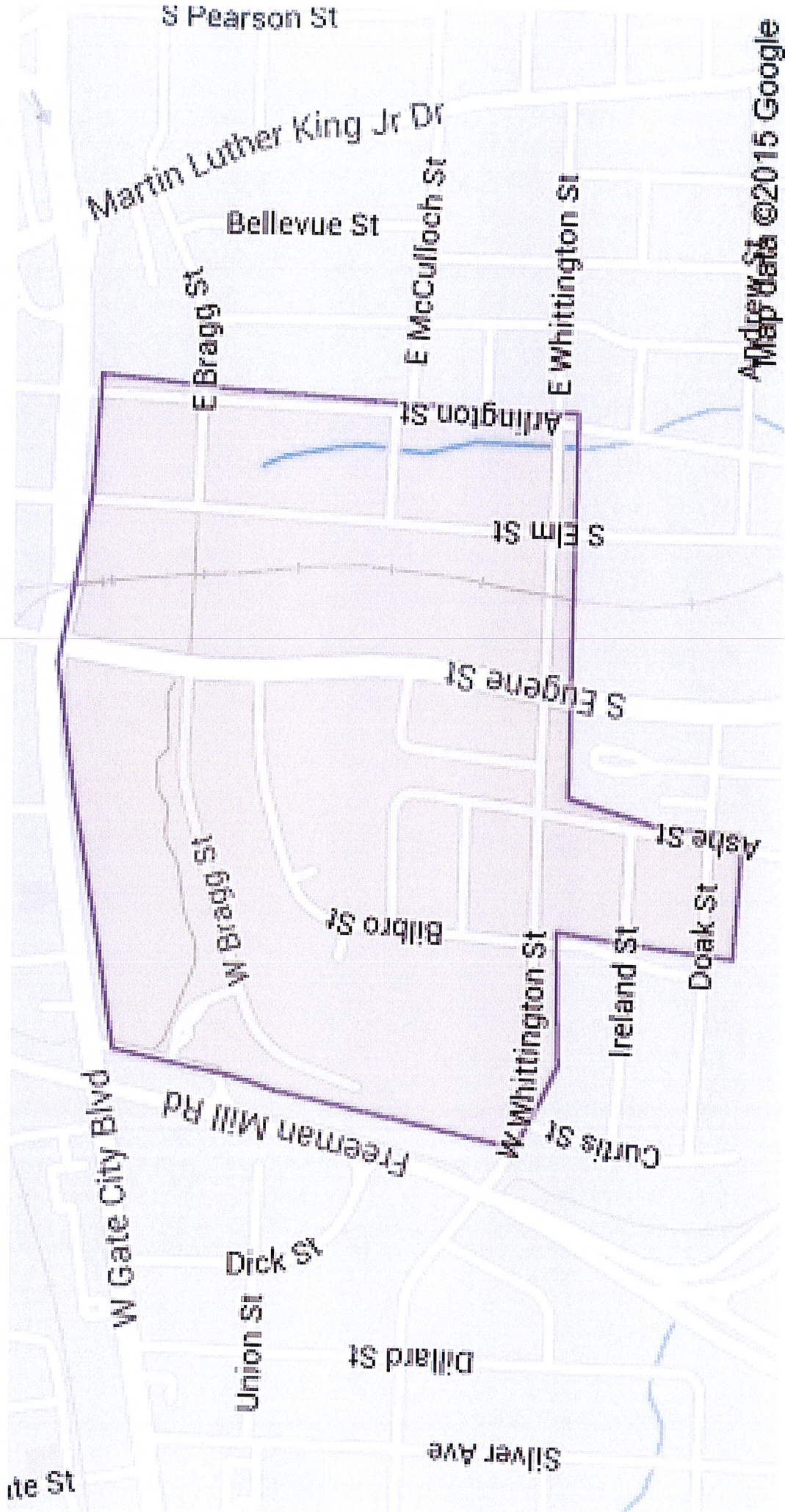
- Stream
- Railroad
- Downtown Greenway
- Building Footprint
- Parcel Boundary
- School
- Church
- Parkland
- Cemetery

## Street Changes

- Street Alignment based on 1943 Map
- Street Alignment, 2013
- Warnersville Area



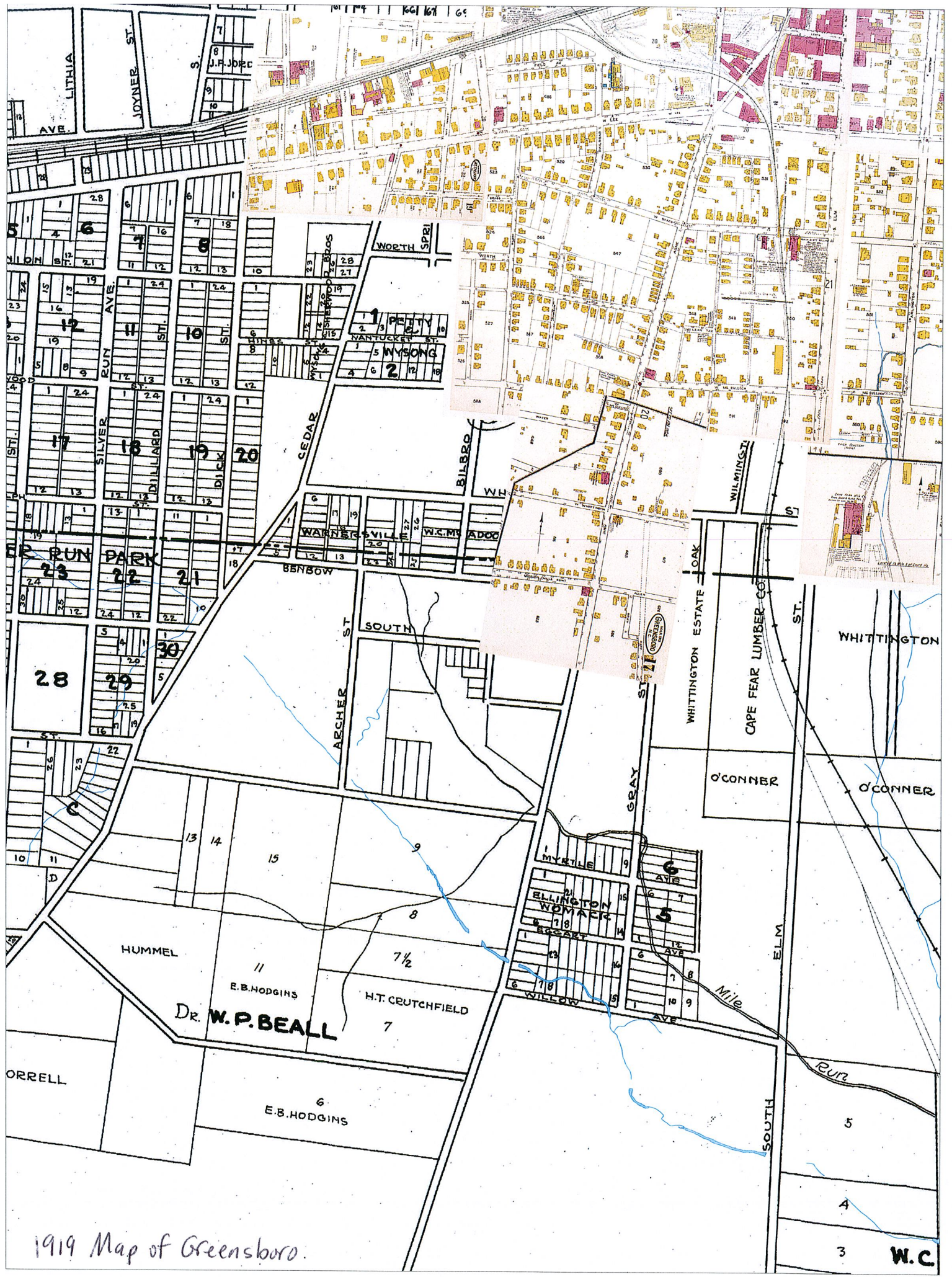




Map data ©2015 Google

Contemporary Map of Warnersville





1919 Map of Greensboro.

W.C



# Schools in Warnersville Neighborhood, 1875 - Present

## Legend

- Schools
- Warnersville Neighborhood

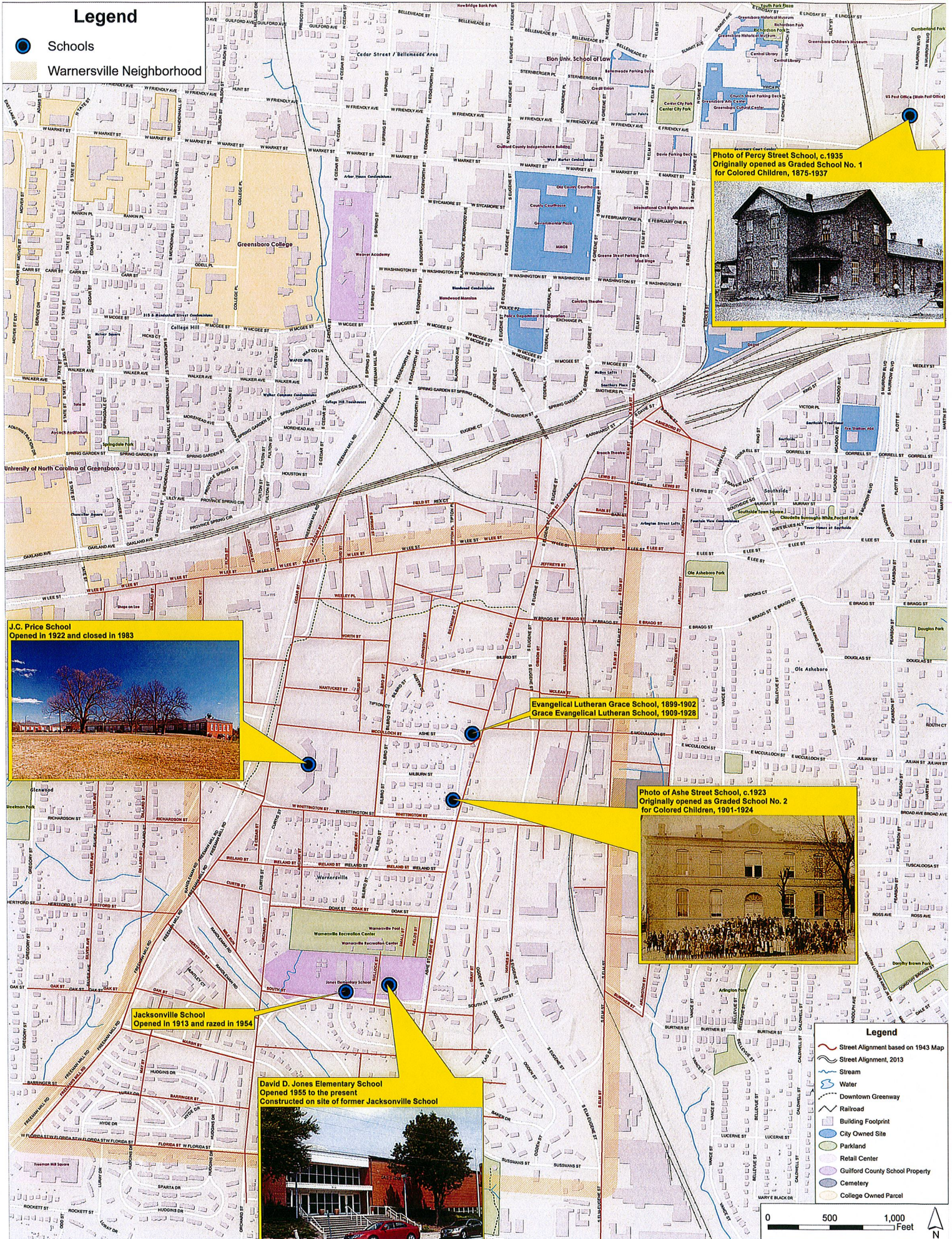
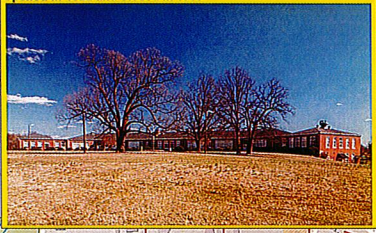


Photo of Percy Street School, c.1935  
Originally opened as Graded School No. 1  
for Colored Children, 1875-1937

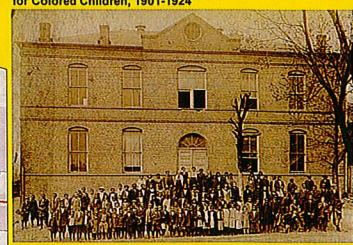


J.C. Price School  
Opened in 1922 and closed in 1983



Evangelical Lutheran Grace School, 1899-1902  
Grace Evangelical Lutheran School, 1909-1928

Photo of Ashe Street School, c.1923  
Originally opened as Graded School No. 2  
for Colored Children, 1901-1924



Jacksonville School  
Opened in 1913 and razed in 1954

David D. Jones Elementary School  
Opened 1955 to the present  
Constructed on site of former Jacksonville School



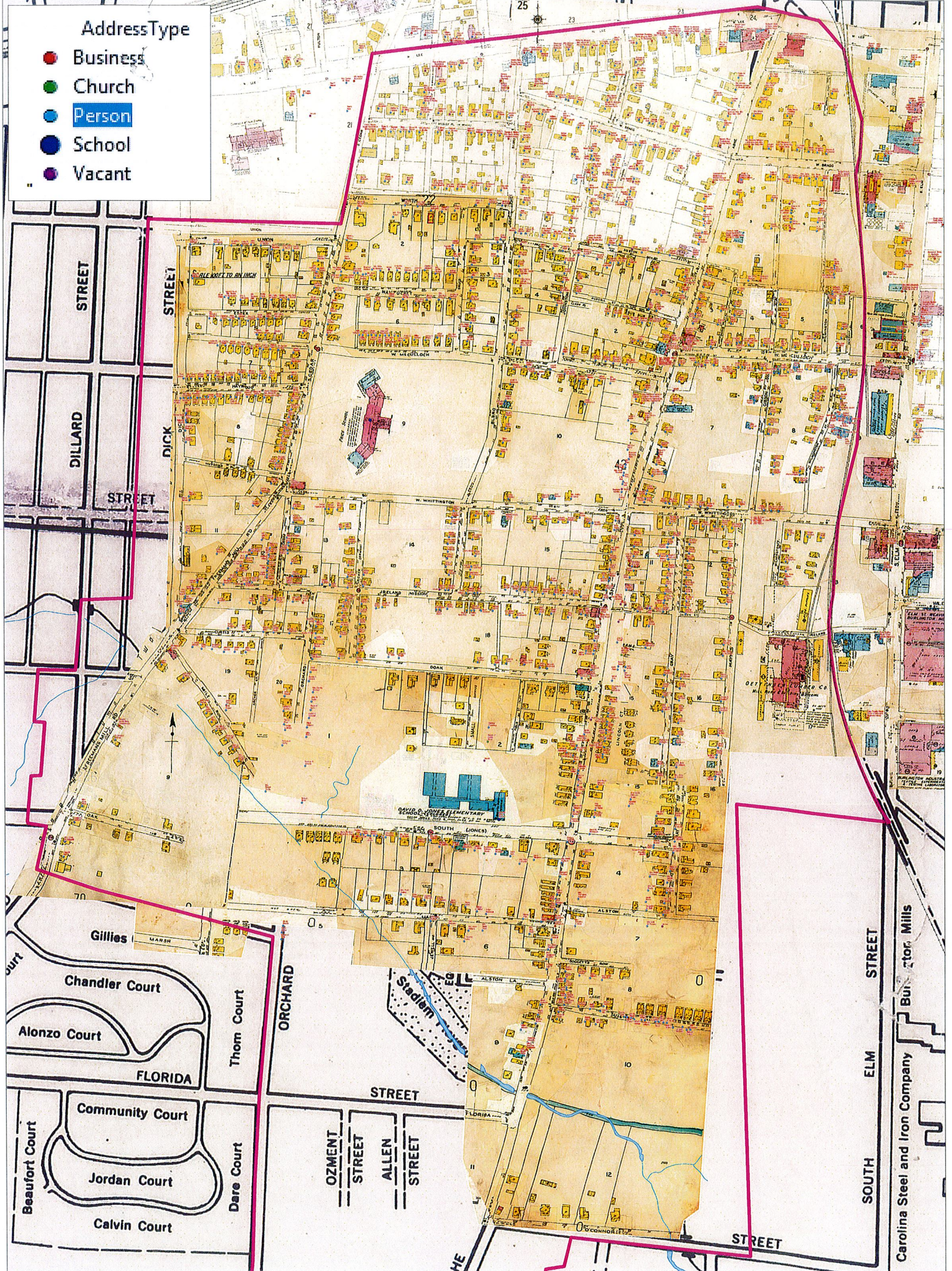
- ### Legend
- Street Alignment based on 1943 Map
  - Street Alignment, 2013
  - Stream
  - Water
  - Downtown Greenway
  - Railroad
  - Building Footprint
  - City Owned Site
  - Parkland
  - Retail Center
  - Guilford County School Property
  - Cemetery
  - College Owned Parcel





AddressType

- Business
- Church
- Person
- School
- Vacant



Carolina Steel and Iron Company  
Burton Mills